

## HSP60 antibody [HSPD1/780]

Cat. No. GTX34788

Host	Mouse
Clonality	Monoclonal
Isotype	IgG1
Applications	WB, ICC/IF, IHC-P, FCM, Protein Array
Reactivity	Human, Mouse, Rat, Rabbit, Sheep, Bovine, Dog, Hamster, Chicken, Pig, Monkey

Package  
100 µg

## Applications

## Application Note

\*Optimal dilutions/concentrations should be determined by the researcher.

Suggested dilution	Recommended dilution
WB	1-2µg/ml
ICC/IF	1-2µg/ml
IHC-P	1-2µg/ml for 30 minutes at RT
FCM	1-2µg/10 <sup>6</sup> cells
Protein Array	Assay dependent

**Note : Staining of formalin-fixed tissues requires heating tissue sections in 10mM Tris with 1mM EDTA, pH 9.0, for 45 min at 95°C followed by cooling at RT for 20 minutes.**

Not tested in other applications.

Calculated MW 61 kDa. ( [Note](#) )

## Properties

Form	Liquid
Buffer	PBS, 0.05% BSA
Preservative	0.05% Sodium azide
Storage	Store as concentrated solution. Centrifuge briefly prior to opening vial. Store at 4°C.
Concentration	0.2 mg/ml (Please refer to the vial label for the specific concentration.)
Immunogen	Recombinant human HSPD1 protein
Purification	Protein A/G purified
Conjugation	Unconjugated

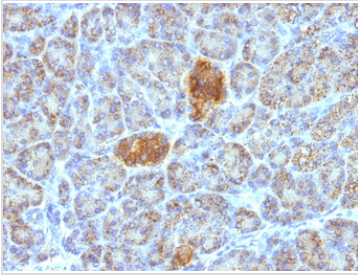
For full product information, images and publications, please visit our [website](#).

For laboratory research use only. Not for any clinical, therapeutic, or diagnostic use in humans or animals. Not for animal or human consumption.

## Note

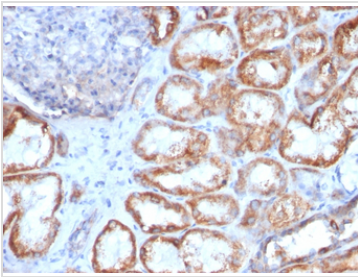
Purchasers shall not, and agree not to enable third parties to, analyze, copy, reverse engineer or otherwise attempt to determine the structure or sequence of the product.

## DATA IMAGES



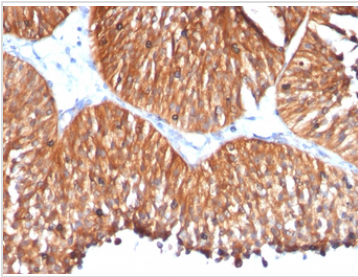
### GTX34788 IHC-P Image

IHC-P analysis of human pancreas tissue using GTX34788 HSP60 antibody [HSPD1/780].



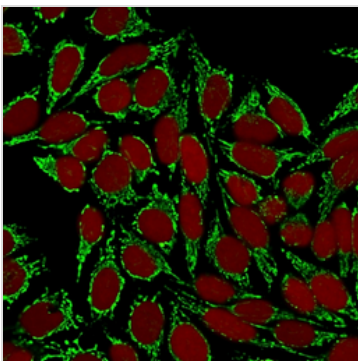
### GTX34788 IHC-P Image

IHC-P analysis of human renal cell carcinoma tissue using GTX34788 HSP60 antibody [HSPD1/780].



### GTX34788 IHC-P Image

IHC-P analysis of human bladder carcinoma tissue using GTX34788 HSP60 antibody [HSPD1/780].



### GTX34788 ICC/IF Image

ICC/IF analysis of MeOH-fixed HeLa cells using GTX34788 HSP60 antibody [HSPD1/780].

Green : Primary antibody

Red : nucleus



For full product information, images and publications, please visit our [website](#).