

## Melan A antibody [MLANA/1409R]

Cat. No. GTX34831

Host	Rabbit
Clonality	Monoclonal
Isotype	IgG
Applications	WB, IHC-P
Reactivity	Human, Mouse, Rat, Dog

Package  
100 µg

## Applications

## Application Note

\*Optimal dilutions/concentrations should be determined by the researcher.

Suggested dilution	Recommended dilution
WB	1-2 µg
IHC-P	1-2µg/ml for 30 minutes at RT

**Note : Staining of formalin-fixed tissues requires heating tissue sections in 10mM Tris with 1mM EDTA, pH 9.0, for 45 min at 95°C followed by cooling at RT for 20 minutes.**

Not tested in other applications.

Calculated MW 13 kDa. ( [Note](#) )

## Properties

Form	Liquid
Buffer	PBS, 0.05% BSA
Preservative	0.05% Sodium azide
Storage	Store as concentrated solution. Centrifuge briefly prior to opening vial. For short-term storage (1-2 weeks), store at 4°C. For long-term storage, aliquot and store at -20°C or below. Avoid multiple freeze-thaw cycles.
Concentration	0.2 mg/ml (Please refer to the vial label for the specific concentration.)
Immunogen	Recombinant full-length hMART-1 protein
Purification	Protein A/G purified
Conjugation	Unconjugated

## Note

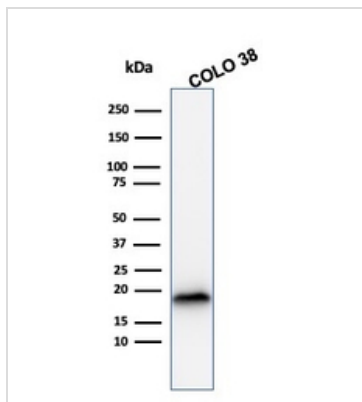
For laboratory research use only. Not for any clinical, therapeutic, or diagnostic use in humans or animals. Not for animal or human consumption.

Purchasers shall not, and agree not to enable third parties to, analyze, copy, reverse engineer or otherwise attempt to determine the structure or sequence of the product.



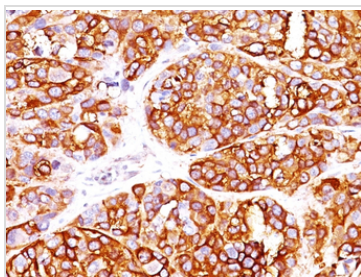
For full product information, images and publications, please visit our [website](#).

## DATA IMAGES



### GTX34831 WB Image

WB analysis of COLO38 whole cell lysate using GTX34831 Melan A antibody [MLANA/1409R]].



### GTX34831 IHC-P Image

IHC-P analysis of human melanoma tissue using GTX34831 Melan A antibody [MLANA/1409R].



For full product information, images and publications, please visit our [website](#).