

Melan A antibody [A103]

Cat. No. GTX34832

| | |
|--------------|------------------------|
| Host | Mouse |
| Clonality | Monoclonal |
| Isotype | IgG1 |
| Applications | WB, ICC/IF, IHC-P, FCM |
| Reactivity | Human, Mouse, Rat, Dog |

 Review (1)Package
100 µg

Applications

Application Note

*Optimal dilutions/concentrations should be determined by the researcher.

| Suggested dilution | Recommended dilution |
|--------------------|-------------------------------|
| WB | 1-2µg/ml |
| ICC/IF | 1-2µg/ml |
| IHC-P | 1-2µg/ml for 30 minutes at RT |
| FCM | 1-2µg/10 ⁶ cells |

Note : Staining of formalin-fixed tissues requires heating tissue sections in 10mM Tris with 1mM EDTA, pH 9.0, for 45 min at 95°C followed by cooling at RT for 20 minutes.

Not tested in other applications.

Calculated MW 13 kDa. ([Note](#))

Properties

| | |
|---------------|--|
| Form | Liquid |
| Buffer | PBS, 0.05% BSA |
| Preservative | 0.05% Sodium azide |
| Storage | Store as concentrated solution. Centrifuge briefly prior to opening vial. For short-term storage (1-2 weeks), store at 4°C. For long-term storage, aliquot and store at -20°C or below. Avoid multiple freeze-thaw cycles. |
| Concentration | 0.2 mg/ml (Please refer to the vial label for the specific concentration.) |
| Immunogen | Recombinant hMART-1 protein |
| Purification | Protein A/G purified |
| Conjugation | Unconjugated |

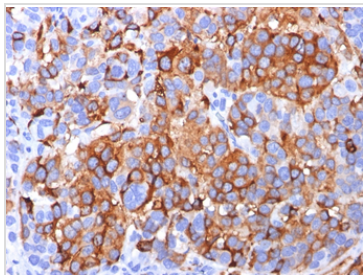
For full product information, images and publications, please visit our [website](#).

For laboratory research use only. Not for any clinical, therapeutic, or diagnostic use in humans or animals. Not for animal or human consumption.

Note

Purchasers shall not, and agree not to enable third parties to, analyze, copy, reverse engineer or otherwise attempt to determine the structure or sequence of the product.

DATA IMAGES



GTX34832 IHC-P Image

IHC-P analysis of human melanoma tissue using GTX34832 Melan A antibody [A103].



For full product information, images and publications, please visit our [website](#).