

Nucleolin antibody [364-5]

Cat. No. GTX34916

Host	Mouse
Clonality	Monoclonal
Isotype	IgG1
Applications	WB, ICC/IF, IHC-P, FCM
Reactivity	Human

Package
100 µg

Applications

Application Note

*Optimal dilutions/concentrations should be determined by the researcher.

Suggested dilution	Recommended dilution
WB	1-2µg/ml
ICC/IF	1-2µg/ml
IHC-P	0.25-0.5µg/ml for 30 minutes at RT
FCM	1-2µg/10 ⁶ cells

Note : Staining of formalin-fixed tissues requires heating tissue sections in 10mM Tris with 1mM EDTA, pH 9.0, for 45 min at 95°C followed by cooling at RT for 20 minutes.

Not tested in other applications.

Calculated MW 77 kDa. ([Note](#))

Product Note We do not recommend use of this product for Mouse,Rat,Bovine samples.

Properties

Form	Liquid
Buffer	PBS, 0.05% BSA
Preservative	0.05% Sodium azide
Storage	Store as concentrated solution. Centrifuge briefly prior to opening vial. For short-term storage (1-2 weeks), store at 4°C. For long-term storage, aliquot and store at -20°C or below. Avoid multiple freeze-thaw cycles.
Concentration	0.2 mg/ml (Please refer to the vial label for the specific concentration.)
Immunogen	lysate of SU-DHL-1 Nuclei
Purification	Protein A/G purified
Conjugation	Unconjugated



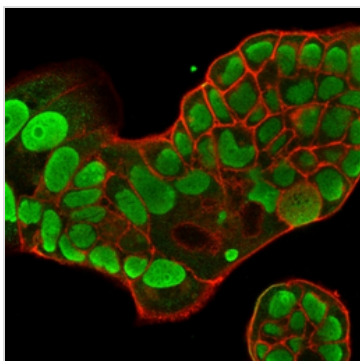
For full product information, images and publications, please visit our [website](#).

For laboratory research use only. Not for any clinical, therapeutic, or diagnostic use in humans or animals. Not for animal or human consumption.

Note

Purchasers shall not, and agree not to enable third parties to, analyze, copy, reverse engineer or otherwise attempt to determine the structure or sequence of the product.

DATA IMAGES

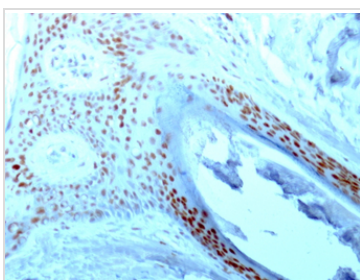


GTx34916 ICC/IF Image

ICC/IF analysis of PFA-fixed MCF-7 cells using GTx34916 Nucleolin antibody [364-5].

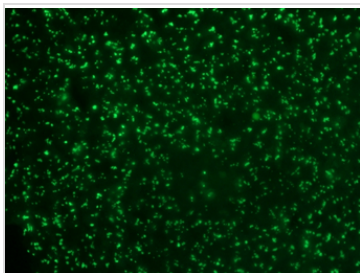
Green : Primary antibody

Red : Phalloidin



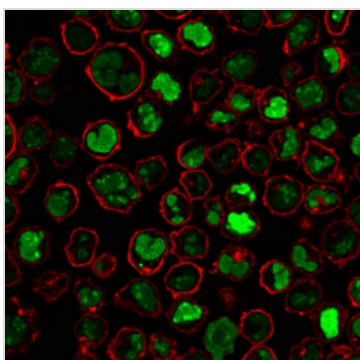
GTx34916 IHC-P Image

IHC-P analysis of human skin tissue using GTx34916 Nucleolin antibody [364-5].



GTx34916 IHC-P Image

IHC-P analysis of rat kidney tissue using GTx34916 Nucleolin antibody [364-5].



GTx34916 ICC/IF Image

ICC/IF analysis of PFA-fixed K562 cells using GTx34916 Nucleolin antibody [364-5].

Green : Primary antibody

Red : Phalloidin



For full product information, images and publications, please visit our [website](#).