

NuMA antibody [A73-B/D12]

Cat. No. GTX34917

Host	Mouse
Clonality	Monoclonal
Isotype	IgM
Applications	ICC/IF, IHC-P, FCM
Reactivity	Human

Package
100 µg

Applications

Application Note

*Optimal dilutions/concentrations should be determined by the researcher.

Suggested dilution	Recommended dilution
ICC/IF	1-2µg/ml
IHC-P	1-2µg/ml for 30 minutes at RT
FCM	1-2µg/10 ⁶ cells

Note : Staining of formalin-fixed tissues requires heating tissue sections in 10mM Tris with 1mM EDTA, pH 9.0, for 45 min at 95°C followed by cooling at RT for 20 minutes.

Not tested in other applications.

Product Note

Recognizes a phosphorylated protein of 228kDa, identified as nuclear mitotic apparatus protein (NuMA). Its epitope is resistant to phosphatases.

Properties

Form	Liquid
Buffer	PBS, 0.05% BSA
Preservative	0.05% Sodium azide
Storage	Store as concentrated solution. Centrifuge briefly prior to opening vial. For short-term storage (1-2 weeks), store at 4°C. For long-term storage, aliquot and store at -20°C or below. Avoid multiple freeze-thaw cycles.
Concentration	0.2 mg/ml (Please refer to the vial label for the specific concentration.)
Immunogen	Colon carcinoma 174T cells
Purification	PEG precipitation
Conjugation	Unconjugated

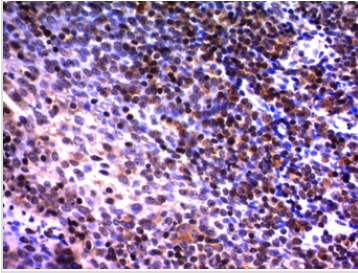


For full product information, images and publications, please visit our [website](#).

Note

For laboratory research use only. Not for any clinical, therapeutic, or diagnostic use in humans or animals. Not for animal or human consumption.

Purchasers shall not, and agree not to enable third parties to, analyze, copy, reverse engineer or otherwise attempt to determine the structure or sequence of the product.

DATA IMAGES

GTx34917 IHC-P Image

IHC-P analysis of human tonsil tissue using GTx34917 NuMA antibody [A73-B/D12].



For full product information, images and publications, please visit our [website](#).