

p21 Cip1 antibody [CIP1/823]

Cat. No. GTX34924

Host	Mouse
Clonality	Monoclonal
Isotype	IgG2a
Applications	WB, ICC/IF, IHC-P
Reactivity	Human

Package
100 µg

Applications

Application Note

*Optimal dilutions/concentrations should be determined by the researcher.

Suggested dilution	Recommended dilution
WB	1-2µg/ml
ICC/IF	1-2µg/ml
IHC-P	2-4µg/ml for 30 minutes at RT

Note : Staining of formalin-fixed tissues requires heating tissue sections in 10mM Tris with 1mM EDTA, pH 9.0, for 45 min at 95°C followed by cooling at RT for 20 minutes.

Not tested in other applications.

Calculated MW	18 kDa. (Note)
Product Note	This MAb recognizes a 21kDa protein, identified as the p21WAF1 tumor suppressor protein. This MAb is highly specific to p21 and shows no cross-reaction with other closely related mitotic inhibitors. We do not recommend use of this product for Mouse,Rat samples.

Properties

Form	Liquid
Buffer	PBS, 0.05% BSA
Preservative	0.05% Sodium azide
Storage	Store as concentrated solution. Centrifuge briefly prior to opening vial. For short-term storage (1-2 weeks), store at 4°C. For long-term storage, aliquot and store at -20°C or below. Avoid multiple freeze-thaw cycles.
Concentration	0.2 mg/ml (Please refer to the vial label for the specific concentration.)
Immunogen	Recombinant full-length human CDKN1A protein
Purification	Protein A/G purified
Conjugation	Unconjugated



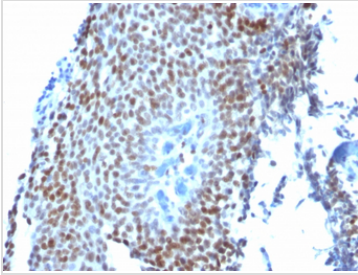
For full product information, images and publications, please visit our [website](#).

For laboratory research use only. Not for any clinical, therapeutic, or diagnostic use in humans or animals. Not for animal or human consumption.

Note

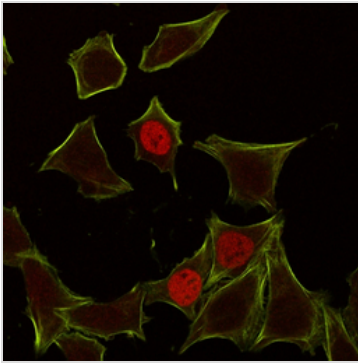
Purchasers shall not, and agree not to enable third parties to, analyze, copy, reverse engineer or otherwise attempt to determine the structure or sequence of the product.

DATA IMAGES



GTx34924 IHC-P Image

IHC-P analysis of human bladder carcinoma tissue using GTx34924 p21 Cip1 antibody [CIP1/823].

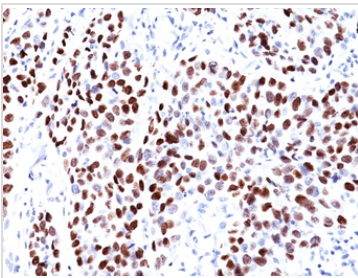


GTx34924 ICC/IF Image

ICC/IF analysis of HeLa cells using GTx34924 p21 Cip1 antibody [CIP1/823].

Red : Primary antibody

Green : Phalloidin



GTx34924 IHC-P Image

IHC-P analysis of human lung sqcc tissue using GTx34924 p21 Cip1 antibody [CIP1/823].



For full product information, images and publications, please visit our [website](#).