

p21 Cip1 antibody [DCS-60.2]

Cat. No. GTX34927

| | |
|--------------------|-------------------------|
| Host | Mouse |
| Clonality | Monoclonal |
| Isotype | IgG2a |
| Application | WB, ICC/IF, IHC-P, FACS |
| Reactivity | Human |

Package
100 µg

APPLICATION

Application Note

*Optimal dilutions/concentrations should be determined by the researcher.

| Suggested dilution | Recommended dilution |
|--------------------|-------------------------------|
| WB | 1-2µg/ml |
| ICC/IF | 1-2µg/ml |
| IHC-P | 2-4µg/ml for 30 minutes at RT |
| FACS | 1-2µg/10 ⁶ cells |

Note : Staining of formalin-fixed tissues requires heating tissue sections in 10mM Tris with 1mM EDTA, pH 9.0, for 45 min at 95°C followed by cooling at RT for 20 minutes.

Not tested in other applications.

Calculated MW 18 kDa. ([Note](#))

Product Note

This MAb recognizes a 21kDa protein, identified as the p21WAF1 tumor suppressor protein. This MAb is highly specific to p21 and shows no cross-reaction with other closely related mitotic inhibitors. We do not recommend use of this product for Mouse,Rat samples.

PROPERTIES

| | |
|----------------------|--|
| Form | Liquid |
| Buffer | PBS, 0.05% BSA |
| Preservative | 0.05% Sodium azide |
| Storage | Store as concentrated solution. Centrifuge briefly prior to opening vial. For short-term storage (1-2 weeks), store at 4°C. For long-term storage, aliquot and store at -20°C or below. Avoid multiple freeze-thaw cycles. |
| Concentration | 0.2 mg/ml (Please refer to the vial label for the specific concentration.) |
| Immunogen | Recombinant full-length human p21 protein |
| Purification | Protein A/G purified |



For full product information, images and publications, please visit our [website](#).

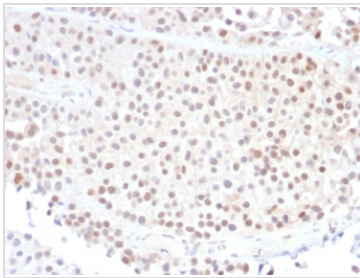
Conjugation

Unconjugated

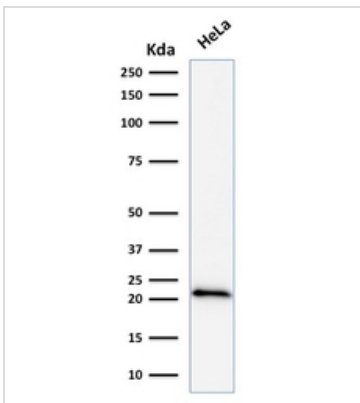
Note

For laboratory research use only. Not for any clinical, therapeutic, or diagnostic use in humans or animals. Not for animal or human consumption.

Purchasers shall not, and agree not to enable third parties to, analyze, copy, reverse engineer or otherwise attempt to determine the structure or sequence of the product.

DATA IMAGES

GTX34927 IHC-P Image

IHC-P analysis of human bladder carcinoma tissue using GTX34927 p21 Cip1 antibody [DCS-60.2].


GTX34927 WB Image

WB analysis of HeLa cell lysate using GTX34927 p21 Cip1 antibody [DCS-60.2].



For full product information, images and publications, please visit our [website](#).