

p27 Kip1 antibody [SX53G8]

Cat. No. GTX34928

Host	Mouse
Clonality	Monoclonal
Isotype	IgG1
Applications	ICC/IF, IHC-P, FCM
Reactivity	Human, Mouse, Rat, Monkey

Package
100 µg

Applications

Application Note

*Optimal dilutions/concentrations should be determined by the researcher.

Suggested dilution	Recommended dilution
ICC/IF	1-2µg/ml
IHC-P	0.25-0.5µg/ml for 30 minutes at RT
FCM	1-2µg/10 ⁶ cells

Note : Staining of formalin-fixed tissues requires heating tissue sections in 10mM Tris with 1mM EDTA, pH 9.0, for 45 min at 95°C followed by cooling at RT for 20 minutes.

Not tested in other applications.

Product Note

This MAb recognizes a 27kDa protein, identified as the p27Kip1, a cell cycle regulatory mitotic inhibitor. It is highly specific and shows no cross-reaction with other related mitotic inhibitors.

Properties

Form	Liquid
Buffer	PBS, 0.05% BSA
Preservative	0.05% Sodium azide
Storage	Store as concentrated solution. Centrifuge briefly prior to opening vial. For short-term storage (1-2 weeks), store at 4°C. For long-term storage, aliquot and store at -20°C or below. Avoid multiple freeze-thaw cycles.
Concentration	0.2 mg/ml (Please refer to the vial label for the specific concentration.)
Immunogen	Purified GST-p27 fusion protein of human origin
Purification	Protein A/G purified
Conjugation	Unconjugated



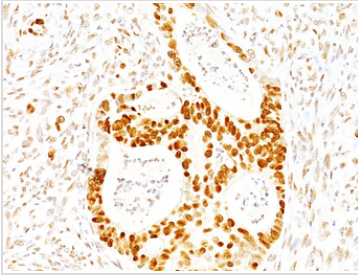
For full product information, images and publications, please visit our [website](#).

For laboratory research use only. Not for any clinical, therapeutic, or diagnostic use in humans or animals. Not for animal or human consumption.

Note

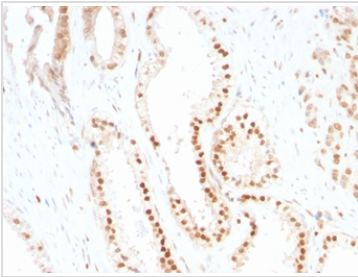
Purchasers shall not, and agree not to enable third parties to, analyze, copy, reverse engineer or otherwise attempt to determine the structure or sequence of the product.

DATA IMAGES



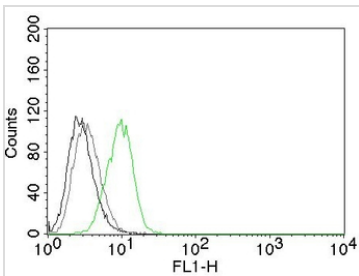
GTx34928 IHC-P Image

IHC-P analysis of human colon carcinoma tissue using GTx34928 p27 Kip1 antibody [SX53G8].



GTx34928 IHC-P Image

IHC-P analysis of human prostate carcinoma tissue using GTx34928 p27 Kip1 antibody [SX53G8].



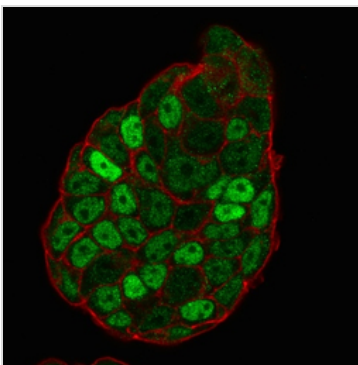
GTx34928 FCM Image

FACS analysis of HeLa cells using GTx34928 p27 Kip1 antibody [SX53G8].

Black : Blank

Grey : Isotype Control

Green : Primary antibody



GTx34928 ICC/IF Image

ICC/IF analysis of PFA-fixed MCF-7 cells using GTx34928 p27 Kip1 antibody [SX53G8].

Green : Primary antibody

Red : Phalloidin



For full product information, images and publications, please visit our [website](https://www.genetex.com).