

## p27 Kip1 antibody [KIP1/769]

Cat No. GTX34930

<b>Host</b>	Mouse
<b>Clonality</b>	Monoclonal
<b>Isotype</b>	IgG1
<b>Application</b>	WB, ICC/IF, IHC-P, FACS
<b>Reactivity</b>	Human, Mouse, Rat, Monkey

Package  
100 µg

## APPLICATION

## Application Note

\*Optimal dilutions/concentrations should be determined by the researcher.

Suggested dilution	Dilution
WB	1-2µg/ml
ICC/IF	1-2µg/ml
IHC-P	0.25-0.5µg/ml for 30 minutes at RT
FACS	1-2µg/10 <sup>6</sup> cells

**Note : Staining of formalin-fixed tissues requires heating tissue sections in 10mM Tris with 1mM EDTA, pH 9.0, for 45 min at 95°C followed by cooling at RT for 20 minutes.**

Not tested in other applications.

**Calculated MW** 22 kDa. ( [Note](#) )

**Specificity/Sensitivity** This MAb recognizes a 27kDa protein, identified as the p27Kip1, a cell cycle regulatory mitotic inhibitor. It is highly specific and shows no cross-reaction with other related mitotic inhibitors.

## PROPERTIES

<b>Form</b>	Liquid
<b>Buffer</b>	10mM PBS, 0.05% BSA, 0.05% sodium azide (Please contact us for PBS only format)
<b>Storage</b>	Store as concentrated solution. Centrifuge briefly prior to opening vial. For short-term storage (1-2 weeks), store at 4°C. For long-term storage, aliquot and store at -20°C or below. Avoid multiple freeze-thaw cycles.
<b>Concentration</b>	0.2 mg/ml
<b>Immunogen</b>	Recombinant full-length human CDKN1B protein
<b>Purification</b>	Protein A/G purified
<b>Conjugation</b>	Unconjugated

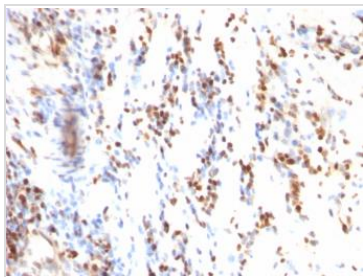


For full product information, images and publications, please visit our [website](#).

Date 2020 / 06 / 02 Page 1 of 2

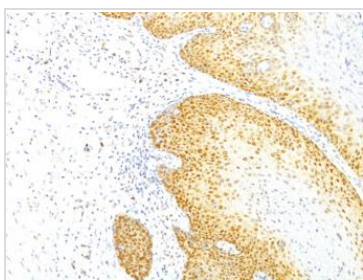
**Note** For laboratory use only. Not for any clinical, therapeutic, or diagnostic use in humans or animals. Not for animal or human consumption.

DATA IMAGES



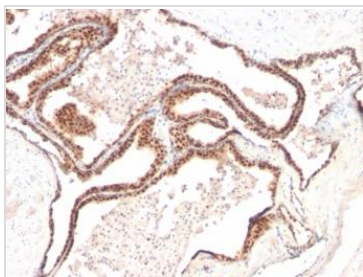
**GTX34930 IHC-P Image**

IHC-P analysis of human colon carcinoma tissue using GTX34930 p27 Kip1 antibody [KIP1/769].



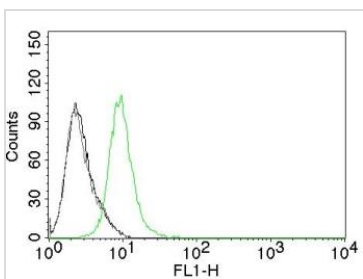
**GTX34930 IHC-P Image**

IHC-P analysis of human cervical carcinoma tissue using GTX34930 p27 Kip1 antibody [KIP1/769].



**GTX34930 IHC-P Image**

IHC-P analysis of human prostate carcinoma tissue using GTX34930 p27 Kip1 antibody [KIP1/769].



**GTX34930 FACS Image**

FACS analysis of Jurkat cells using GTX34930 p27 Kip1 antibody [KIP1/769].

- Black : Blank
- Grey : Isotype Control
- Green : Primary antibody



For full product information, images and publications, please visit our [website](#).