

p27 Kip1 antibody [DCS-72.F6]

Cat No. GTX34931

Host	Mouse
Clonality	Monoclonal
Isotype	IgG1
Application	WB, ICC/IF, IHC-P, FACS
Reactivity	Human, Mouse, Rat, Monkey

Package
100 µg

APPLICATION

Application Note

*Optimal dilutions/concentrations should be determined by the researcher.

Suggested dilution	Dilution
WB	1-2µg/ml
ICC/IF	1-2µg/ml
IHC-P	0.25-0.5µg/ml for 30 minutes at RT
FACS	1-2µg/10 ⁶ cells

Note : Staining of formalin-fixed tissues requires heating tissue sections in 10mM Tris with 1mM EDTA, pH 9.0, for 45 min at 95°C followed by cooling at RT for 20 minutes.

Not tested in other applications.

Calculated MW 22 kDa. ([Note](#))

Specificity/Sensitivity Recognizes a 27kDa protein, identified as the p27Kip1, a cell cycle regulatory mitotic inhibitor. Its epitope spans between aa 83-204 of p27. It is highly specific and shows no cross-reaction with other related mitotic inhibitors.

PROPERTIES

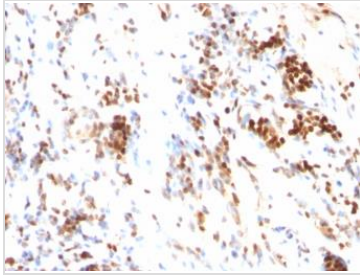
Form	Liquid
Buffer	10mM PBS, 0.05% BSA, 0.05% sodium azide (Please contact us for PBS only format)
Storage	Store as concentrated solution. Centrifuge briefly prior to opening vial. For short-term storage (1-2 weeks), store at 4°C. For long-term storage, aliquot and store at -20°C or below. Avoid multiple freeze-thaw cycles.
Concentration	0.2 mg/ml
Immunogen	Recombinant full-length Mouse p27 protein
Purification	Protein A/G purified
Conjugation	Unconjugated



For full product information, images and publications, please visit our [website](#).

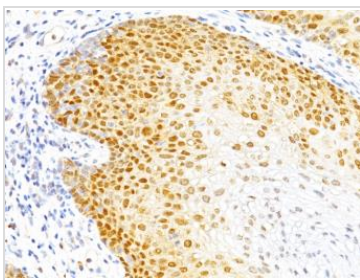
Note For laboratory use only. Not for any clinical, therapeutic, or diagnostic use in humans or animals. Not for animal or human consumption.

DATA IMAGES



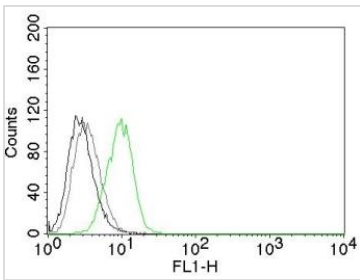
GTX34931 IHC-P Image

IHC-P analysis of human colon cancer tissue using GTX34931 p27 Kip1 antibody [DCS-72.F6].



GTX34931 IHC-P Image

IHC-P analysis of human cervical cancer tissue using GTX34931 p27 Kip1 antibody [DCS-72.F6].



GTX34931 FACS Image

FACS analysis of HeLa cells using GTX34931 p27 Kip1 antibody [DCS-72.F6].

- Black : Blank
- Grey : Isotype Control
- Green : Primary antibody



For full product information, images and publications, please visit our [website](#).