

p57 Kip2 antibody [57P06]

Cat. No. GTX34942

Host	Mouse
Clonality	Monoclonal
Isotype	IgG2b
Application	ICC/IF, IHC-P, FACS
Reactivity	Human, Mouse

Package
100 µg

APPLICATION

Application Note

*Optimal dilutions/concentrations should be determined by the researcher.

Suggested dilution	Recommended dilution
ICC/IF	1-2µg/ml
IHC-P	0.25-0.5µg/ml for 30 minutes at RT
FACS	1-2µg/10 ⁶ cells

Note : Staining of formalin-fixed tissues requires heating tissue sections in 10mM Tris with 1mM EDTA, pH 9.0, for 45 min at 95°C followed by cooling at RT for 20 minutes.

Not tested in other applications.

Calculated MW	32 kDa. (Note)
Product Note	Recognizes a protein of 57kDa, identified as p57Kip2. It shows no cross-reaction with p27Kip1.

PROPERTIES

Form	Liquid
Buffer	PBS, 0.05% BSA
Preservative	0.05% Sodium azide
Storage	Store as concentrated solution. Centrifuge briefly prior to opening vial. For short-term storage (1-2 weeks), store at 4°C. For long-term storage, aliquot and store at -20°C or below. Avoid multiple freeze-thaw cycles.
Concentration	0.2 mg/ml (Please refer to the vial label for the specific concentration.)
Immunogen	Recombinant full-length human p57Kip2 protein
Purification	Protein A/G purified
Conjugation	Unconjugated



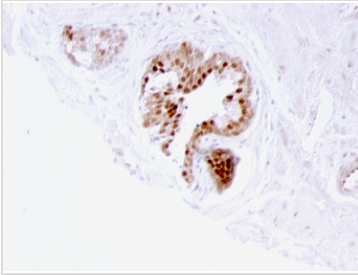
For full product information, images and publications, please visit our [website](#).

For laboratory research use only. Not for any clinical, therapeutic, or diagnostic use in humans or animals. Not for animal or human consumption.

Note

Purchasers shall not, and agree not to enable third parties to, analyze, copy, reverse engineer or otherwise attempt to determine the structure or sequence of the product.

DATA IMAGES



GTX34942 IHC-P Image

IHC-P analysis of human prostate carcinoma tissue using GTX34942 p57 Kip2 antibody [57P06].



For full product information, images and publications, please visit our [website](#).