

# Placental Alkaline Phosphatase antibody [ALPP/870]

**Cat. No. GTX34972**

<b>Host</b>	Mouse
<b>Clonality</b>	Monoclonal
<b>Isotype</b>	IgG2b
<b>Applications</b>	WB, IHC-P
<b>Reactivity</b>	Human

**Package**  
100 µg

## Applications

### Application Note

\*Optimal dilutions/concentrations should be determined by the researcher.

Suggested dilution	Recommended dilution
WB	1-2µg/ml
IHC-P	0.25-0.5µg/ml for 30 minutes at RT

Not tested in other applications.

**Calculated MW** 58 kDa. ( [Note](#) )

### Product Note

Reacts with a 70kDa membrane-bound isozyme (Regan and Nagao type) of Placental Alkaline Phosphatase (PLAP) occurring in the placenta during the 3rd trimester of gestation. It is highly specific for PLAP and shows no cross-reaction with other isozymes of alkaline phosphatase.

## Properties

<b>Form</b>	Liquid
<b>Buffer</b>	PBS, 0.05% BSA
<b>Preservative</b>	0.05% Sodium azide
<b>Storage</b>	Store as concentrated solution. Centrifuge briefly prior to opening vial. For short-term storage (1-2 weeks), store at 4°C. For long-term storage, aliquot and store at -20°C or below. Avoid multiple freeze-thaw cycles.
<b>Concentration</b>	0.2 mg/ml (Please refer to the vial label for the specific concentration.)
<b>Immunogen</b>	Recombinant full-length human ALPP protein
<b>Purification</b>	Protein A/G purified
<b>Conjugation</b>	Unconjugated



For full product information, images and publications, please visit our [website](#).

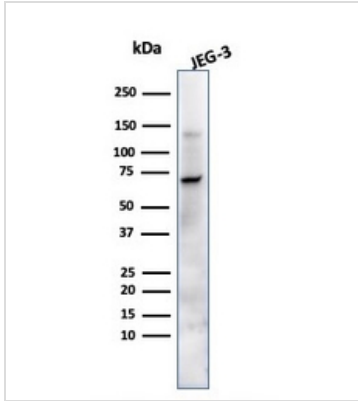
Date 2026 / 01 / 14 Page 1 of 2

For laboratory research use only. Not for any clinical, therapeutic, or diagnostic use in humans or animals. Not for animal or human consumption.

**Note**

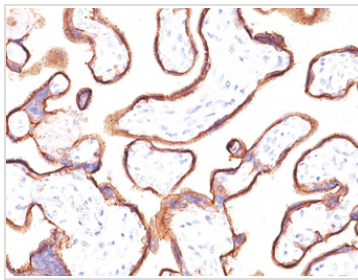
Purchasers shall not, and agree not to enable third parties to, analyze, copy, reverse engineer or otherwise attempt to determine the structure or sequence of the product.

## DATA IMAGES



### GTX34972 WB Image

WB analysis of JEG-3 cell lysate using GTX34972 Placental Alkaline Phosphatase antibody [ALPP/870].



### GTX34972 IHC-P Image

IHC-P analysis of human placenta tissue using GTX34972 Placental Alkaline Phosphatase antibody [ALPP/870].



For full product information, images and publications, please visit our [website](#).