

# PSA antibody [SPM352]

**Cat. No. GTX34989**

|                     |                    |
|---------------------|--------------------|
| <b>Host</b>         | Mouse              |
| <b>Clonality</b>    | Monoclonal         |
| <b>Isotype</b>      | IgG1               |
| <b>Applications</b> | ICC/IF, IHC-P, FCM |
| <b>Reactivity</b>   | Human              |

**Package**  
100 µg

## Applications

### Application Note

\*Optimal dilutions/concentrations should be determined by the researcher.

| Suggested dilution | Recommended dilution          |
|--------------------|-------------------------------|
| ICC/IF             | 1-2µg/ml                      |
| IHC-P              | 1-2µg/ml for 30 minutes at RT |
| FCM                | 1-2µg/10 <sup>6</sup> cells   |

**Note : Staining of formalin-fixed tissues require heating tissue sections in 1mM EDTA buffer, pH 7.5-8.5, for 45 min at 95°C followed by cooling at RT for 20 minutes.**

Not tested in other applications.

### Product Note

Recognizes a single protein of 33-34kDa, identified as the prostate specific antigen (PSA). This MAb is highly specific to PSA and stains prostatic secretory and ductal epithelium in both normal and neoplastic tissues.

## Properties

|                      |  |
|----------------------|--|
| <b>Form</b>          | Liquid   |
| <b>Buffer</b>        | PBS, 0.05% BSA   |
| <b>Preservative</b>  | 0.05% Sodium azide   |
| <b>Storage</b>       | Store as concentrated solution. Centrifuge briefly prior to opening vial. For short-term storage (1-2 weeks), store at 4°C. For long-term storage, aliquot and store at -20°C or below. Avoid multiple freeze-thaw cycles. |
| <b>Concentration</b> | 0.2 mg/ml (Please refer to the vial label for the specific concentration.)   |
| <b>Immunogen</b>     | PSA from human sperm plasma  |
| <b>Purification</b>  | Protein A/G purified   |
| <b>Conjugation</b>   | Unconjugated   |



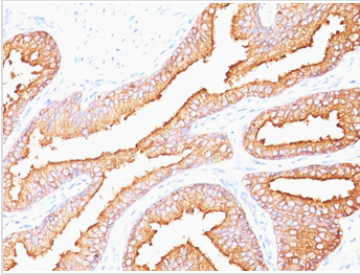
For full product information, images and publications, please visit our [website](#).

For laboratory research use only. Not for any clinical, therapeutic, or diagnostic use in humans or animals. Not for animal or human consumption.

**Note**

Purchasers shall not, and agree not to enable third parties to, analyze, copy, reverse engineer or otherwise attempt to determine the structure or sequence of the product.

## DATA IMAGES



### GTX34989 IHC-P Image

IHC-P analysis of human prostate carcinoma tissue using GTX34989 PSA antibody [SPM352].



For full product information, images and publications, please visit our [website](#).