

Rabbit IgG isotype control

Cat. No. GTX35035

Host	Rabbit
Clonality	Polyclonal
Isotype	IgG
Application	WB, ICC/IF, IHC-P, IHC-Fr, FACS, IP, ELISA, ChIP assay, Control, IHC

Reference (56)

Package

100 µg

APPLICATION

Application Note

Use at a concentration/dilution equivalent to that of your experimental primary antibody.

PROPERTIES

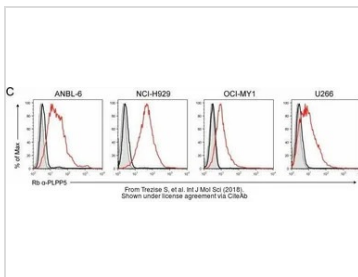
Form	Liquid
Buffer	Borate buffered saline
Preservative	No preservative
Storage	Store as concentrated solution. Centrifuge briefly prior to opening vial. Store at 4°C.
Concentration	Batch dependent (Please refer to the vial label for the specific concentration.)
Conjugation	Unconjugated

For laboratory research use only. Not for any clinical, therapeutic, or diagnostic use in humans or animals. Not for animal or human consumption.

Note

Purchasers shall not, and agree not to enable third parties to, analyze, copy, reverse engineer or otherwise attempt to determine the structure or sequence of the product.

DATA IMAGES

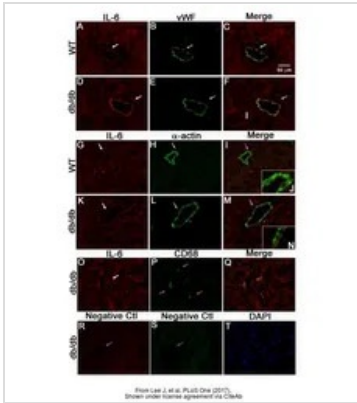


GTX35035 FACS Image

The data was published in the journal Int J Mol Sci in 2018. [PMID: 30042348](https://pubmed.ncbi.nlm.nih.gov/30042348/)

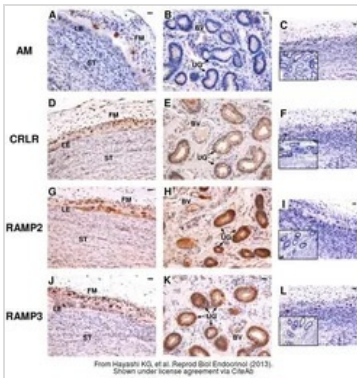


For full product information, images and publications, please visit our [website](https://www.genetex.com).



GTX35035 IHC-Fr Image

The data was published in the journal PLoS One in 2017. [PMID: 29095915](https://pubmed.ncbi.nlm.nih.gov/29095915/)



GTX35035 IHC-P Image

The data was published in the journal Reprod Biol Endocrinol in 2013. [PMID: 23849271](https://pubmed.ncbi.nlm.nih.gov/23849271/)



For full product information, images and publications, please visit our [website](https://www.genetex.com).