

Rat IgG2a isotype control [KLH/G2a-1-1] (PE)

Cat. No. GTX35058

Host	Rat
Clonality	Monoclonal
Isotype	IgG2a
Applications	ICC/IF, FCM, ELISA

References (1)

Package

50 µg

Applications

Application Note

*Optimal dilutions/concentrations should be determined by the researcher.

Suggested dilution	Recommended dilution
ICC/IF	Assay dependent
FCM	Assay dependent
ELISA	Assay dependent

Not tested in other applications.

Product Note Keyhole limpet hemocyanin (KLH)

Properties

Form	Liquid
Buffer	PBS, stabilizer
Preservative	0.1% Sodium azide
Storage	Store as concentrated solution. Centrifuge briefly prior to opening vial. Store at 4°C. Protect from light.
Concentration	0.1 mg/ml (Please refer to the vial label for the specific concentration.)
Immunogen	Keyhole limpet hemocyanin (KLH)
Conjugation	Phycoerythrin (PE) Wavelength

Note

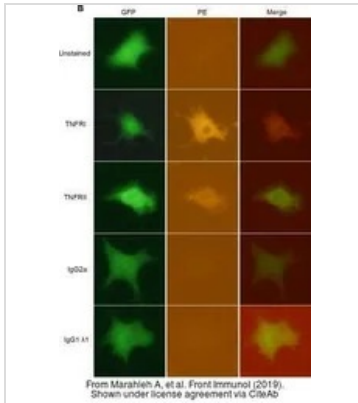
For laboratory research use only. Not for any clinical, therapeutic, or diagnostic use in humans or animals. Not for animal or human consumption.

Purchasers shall not, and agree not to enable third parties to, analyze, copy, reverse engineer or otherwise attempt to determine the structure or sequence of the product.



For full product information, images and publications, please visit our [website](#).

DATA IMAGES

**GTX35058 ICC/IF Image**

The data was published in the journal Front Immunol in 2019. [PMID: 31921183](https://pubmed.ncbi.nlm.nih.gov/31921183/)



For full product information, images and publications, please visit our [website](#).