

# Rat IgG2a isotype control [KLH/G2a-1-1] (PE)

**Cat. No. GTX35058**

<b>Host</b>	Rat
<b>Clonality</b>	Monoclonal
<b>Isotype</b>	IgG2a
<b>Applications</b>	ICC/IF, FCM, ELISA

References ( 1 )

Package

50 µg

## Applications

### Application Note

Use at a concentration/dilution equivalent to that of your experimental primary antibody.

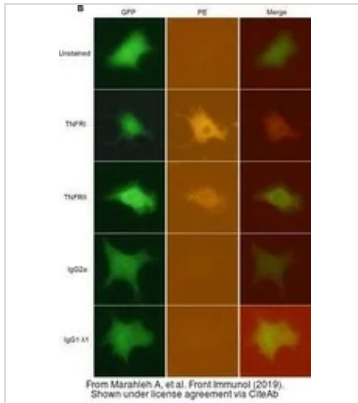
**Product Note** Keyhole limpet hemocyanin (KLH)

## Properties

<b>Form</b>	Liquid
<b>Buffer</b>	PBS, stabilizer
<b>Preservative</b>	0.1% Sodium azide
<b>Storage</b>	Store as concentrated solution. Centrifuge briefly prior to opening vial. Store at 4°C. Protect from light.
<b>Concentration</b>	0.1 mg/ml (Please refer to the vial label for the specific concentration.)
<b>Immunogen</b>	Keyhole limpet hemocyanin (KLH)
<b>Conjugation</b>	Phycoerythrin (PE) <a href="#">Wavelength</a>
<b>Note</b>	For laboratory research use only. Not for any clinical, therapeutic, or diagnostic use in humans or animals. Not for animal or human consumption.  Purchasers shall not, and agree not to enable third parties to, analyze, copy, reverse engineer or otherwise attempt to determine the structure or sequence of the product.



For full product information, images and publications, please visit our [website](#).

**DATA IMAGES**

**GTX35058 ICC/IF Image**

The data was published in the journal Front Immunol in 2019. [PMID: 31921183](https://pubmed.ncbi.nlm.nih.gov/31921183/)



For full product information, images and publications, please visit our [website](https://www.genetex.com).