

## SOX10 antibody [SOX10/991]

Cat. No. GTX35083

Host	Mouse
Clonality	Monoclonal
Isotype	IgG2b
Applications	WB, IHC-P, Protein Array
Reactivity	Human, Mouse

References ( 1 )

Package

100 µg

## Applications

## Application Note

\*Optimal dilutions/concentrations should be determined by the researcher.

Suggested dilution	Recommended dilution
WB	1-2µg/ml
IHC-P	1-2µg/ml for 30 minutes at RT
Protein Array	Assay dependent

**Note : Staining of formalin-fixed tissues requires heating tissue sections in 10mM Tris with 1mM EDTA, pH 9.0, for 45 min at 95°C followed by cooling at RT for 20 minutes.**

Not tested in other applications.

Calculated MW	50 kDa. ( <a href="#">Note</a> )
Product Note	This MAb is highly specific and does not cross-react with other members of the SOX-family.

## Properties

Form	Liquid
Buffer	PBS, 0.05% BSA
Preservative	0.05% Sodium azide
Storage	Store as concentrated solution. Centrifuge briefly prior to opening vial. For short-term storage (1-2 weeks), store at 4°C. For long-term storage, aliquot and store at -20°C or below. Avoid multiple freeze-thaw cycles.
Concentration	0.2 mg/ml (Please refer to the vial label for the specific concentration.)
Immunogen	Recombinant human SOX10 protein fragment (around aa115-269) (exact sequence is proprietary)
Purification	Protein A/G purified
Conjugation	Unconjugated



For full product information, images and publications, please visit our [website](#).

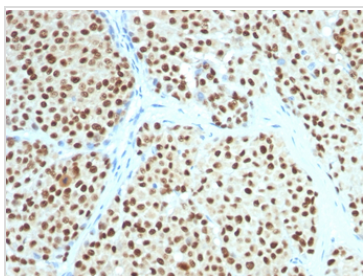
Date 2026 / 01 / 08 Page 1 of 2

For laboratory research use only. Not for any clinical, therapeutic, or diagnostic use in humans or animals. Not for animal or human consumption.

**Note**

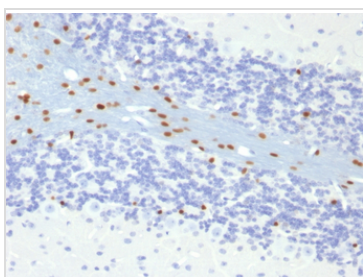
Purchasers shall not, and agree not to enable third parties to, analyze, copy, reverse engineer or otherwise attempt to determine the structure or sequence of the product.

DATA IMAGES



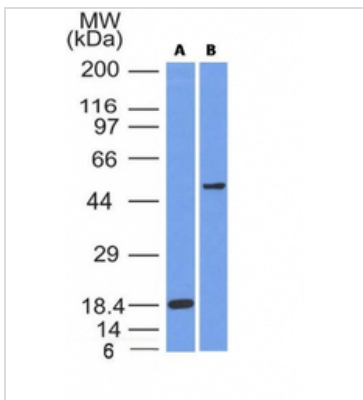
**GTX35083 IHC-P Image**

IHC-P analysis of human melanoma tissue using GTX35083 SOX10 antibody [SOX10/991].



**GTX35083 IHC-P Image**

IHC-P analysis of mouse brain tissue using GTX35083 SOX10 antibody [SOX10/991].



**GTX35083 WB Image**

WB analysis of (A) SOX10 recombinant protein and (B) A375 cell lysates using GTX35083 SOX10 antibody [SOX10/991].



For full product information, images and publications, please visit our [website](https://www.genetex.com).