

# Thymidine Phosphorylase antibody [P-GF.44C]

**Cat. No. GTX35111**

<b>Host</b>	Mouse
<b>Clonality</b>	Monoclonal
<b>Isotype</b>	IgG1
<b>Application</b>	WB, IHC-P, IP
<b>Reactivity</b>	Human, Mouse, Rat

Reference ( 2 )  
 Package  
 100 µg

## APPLICATION

### Application Note

\*Optimal dilutions/concentrations should be determined by the researcher.

Suggested dilution	Recommended dilution
WB	1-2µg/ml
IHC-P	1-2µg/ml for 30 minutes at RT
IP	0.5-1µg/500ug protein lysate

**Note : Staining of formalin-fixed tissues requires heating tissue sections in 10mM Tris with 1mM EDTA, pH 9.0, for 45 min at 95°C followed by cooling at RT for 20 minutes.**

Not tested in other applications.

**Calculated MW** 50 kDa. ( [Note](#) )

## PROPERTIES

<b>Form</b>	Liquid
<b>Buffer</b>	10mM PBS, 0.05% BSA
<b>Preservative</b>	0.05% Sodium azide
<b>Storage</b>	Store as concentrated solution. Centrifuge briefly prior to opening vial. For short-term storage (1-2 weeks), store at 4°C. For long-term storage, aliquot and store at -20°C or below. Avoid multiple freeze-thaw cycles.
<b>Concentration</b>	0.2 mg/ml (Please refer to the vial label for the specific concentration.)
<b>Immunogen</b>	Recombinant full-length human Thymidine Phosphorylase (TP / PD-ECGF) protein
<b>Purification</b>	Protein A/G purified
<b>Conjugation</b>	Unconjugated



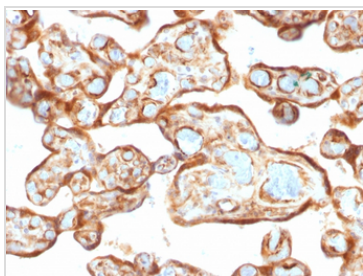
For full product information, images and publications, please visit our [website](#).

For laboratory research use only. Not for any clinical, therapeutic, or diagnostic use in humans or animals. Not for animal or human consumption.

## Note

Purchasers shall not, and agree not to enable third parties to, analyze, copy, reverse engineer or otherwise attempt to determine the structure or sequence of the product.

## DATA IMAGES



### GTX35111 IHC-P Image

IHC-P analysis of human placenta tissue using GTX35111 Thymidine Phosphorylase antibody [P-GF.44C].



For full product information, images and publications, please visit our [website](#).