

## Thyroglobulin antibody [2H11]

Cat. No. GTX35115

Host	Mouse
Clonality	Monoclonal
Isotype	IgG1
Application	IHC-P, FACS
Reactivity	Human, Mouse, Rat

Package  
100 µg

## APPLICATION

## Application Note

\*Optimal dilutions/concentrations should be determined by the researcher.

Suggested dilution	Recommended dilution
IHC-P	0.1-0.2µg/ml 30 min at RT
FACS	1-2µg/10 <sup>6</sup> cells

**Note : Staining of formalin-fixed tissues requires heating tissue sections in 10mM Tris with 1mM EDTA, pH 9.0, for 45 min at 95°C followed by cooling at RT for 20 minutes.**

Not tested in other applications.

Calculated MW	305 kDa. ( <a href="#">Note</a> )
Product Note	MAb 2H11 reacts with a partially defined epitope of human thyroglobulin. This epitope is different from the epitope recognized by MAb 6E1.

## PROPERTIES

Form	Liquid
Buffer	PBS, 0.05% BSA
Preservative	0.05% Sodium azide
Storage	Store as concentrated solution. Centrifuge briefly prior to opening vial. For short-term storage (1-2 weeks), store at 4°C. For long-term storage, aliquot and store at -20°C or below. Avoid multiple freeze-thaw cycles.
Concentration	0.2 mg/ml (Please refer to the vial label for the specific concentration.)
Immunogen	Human thyroid follicular cells
Purification	Protein A/G purified
Conjugation	Unconjugated



For full product information, images and publications, please visit our [website](#).

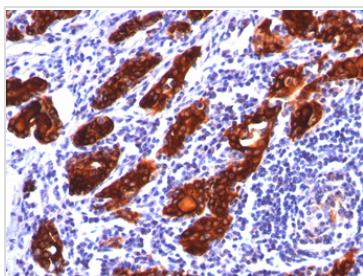
Date 2024 / 05 / 07 Page 1 of 2

For laboratory research use only. Not for any clinical, therapeutic, or diagnostic use in humans or animals. Not for animal or human consumption.

**Note**

Purchasers shall not, and agree not to enable third parties to, analyze, copy, reverse engineer or otherwise attempt to determine the structure or sequence of the product.

## DATA IMAGES



### GTX35115 IHC-P Image

IHC-P analysis of human thyroid tissue using GTX35115 Thyroglobulin antibody [2H11].



For full product information, images and publications, please visit our [website](#).