

## Thyroglobulin antibody [TGB24]

Cat. No. GTX35119

|                     |              |
|---------------------|--------------|
| <b>Host</b>         | Mouse        |
| <b>Clonality</b>    | Monoclonal   |
| <b>Isotype</b>      | IgG1         |
| <b>Applications</b> | IHC-P, ELISA |
| <b>Reactivity</b>   | Human        |

Package  
100 µg

## Applications

## Application Note

\*Optimal dilutions/concentrations should be determined by the researcher.

| Suggested dilution | Recommended dilution      |
|--------------------|---------------------------|
| IHC-P              | 1-2µg/ml for 30 min at RT |
| ELISA              | 2-4µg/ml (for coating)    |

**Note : Staining of formalin-fixed tissues requires heating tissue sections in 10mM Tris with 1mM EDTA, pH 9.0, for 45 min at 95°C followed by cooling at RT for 20 minutes.**

**For ELISA coating, recommend using BSA-free format (please contact us for PBS only format).**

Not tested in other applications.

## Properties

|                      |  |
|----------------------|--|
| <b>Form</b>          | Liquid   |
| <b>Buffer</b>        | PBS, 0.05% BSA   |
| <b>Preservative</b>  | 0.05% Sodium azide   |
| <b>Storage</b>       | Store as concentrated solution. Centrifuge briefly prior to opening vial. For short-term storage (1-2 weeks), store at 4°C. For long-term storage, aliquot and store at -20°C or below. Avoid multiple freeze-thaw cycles. |
| <b>Concentration</b> | 0.2 mg/ml (Please refer to the vial label for the specific concentration.)   |
| <b>Immunogen</b>     | Human thyroid follicular cells   |
| <b>Purification</b>  | Protein A/G purified   |
| <b>Conjugation</b>   | Unconjugated   |

## Note

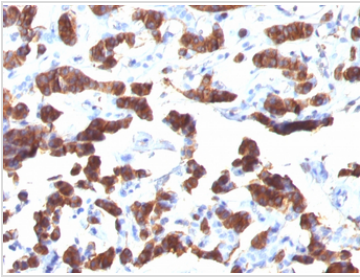
For laboratory research use only. Not for any clinical, therapeutic, or diagnostic use in humans or animals. Not for animal or human consumption.

Purchasers shall not, and agree not to enable third parties to, analyze, copy, reverse engineer or otherwise attempt to determine the structure or sequence of the product.



For full product information, images and publications, please visit our [website](#).

## DATA IMAGES

**GTX35119 IHC-P Image**

IHC-P analysis of human thyroid carcinoma tissue using GTX35119 Thyroglobulin antibody [TGB24].



For full product information, images and publications, please visit our [website](#).