

TNF alpha antibody [TNFA/1172]

Cat. No. GTX35131

Host	Mouse
Clonality	Monoclonal
Isotype	IgM
Applications	ICC/IF, IHC-P, FCM
Reactivity	Human, Rat

Package
100 µg

Applications

Application Note

*Optimal dilutions/concentrations should be determined by the researcher.

Suggested dilution	Recommended dilution
ICC/IF	1-2µg/ml
IHC-P	2-4µg/ml for 30 min at RT
FCM	1-2µg/10 ⁶ cells

Note : Staining of formalin-fixed tissues requires heating tissue sections in 10mM Tris with 1mM EDTA, pH 9.0, for 45 min at 95°C followed by cooling at RT for 20 minutes.

Not tested in other applications.

Properties

Form	Liquid
Buffer	PBS, 0.05% BSA
Preservative	0.05% Sodium azide
Storage	Store as concentrated solution. Centrifuge briefly prior to opening vial. For short-term storage (1-2 weeks), store at 4°C. For long-term storage, aliquot and store at -20°C or below. Avoid multiple freeze-thaw cycles.
Concentration	0.2 mg/ml (Please refer to the vial label for the specific concentration.)
Immunogen	Recombinant full-length human TNF-alpha protein
Purification	Purified IgM
Conjugation	Unconjugated

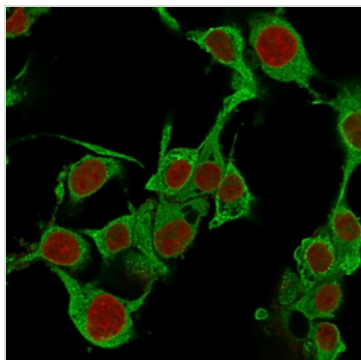
Note

For laboratory research use only. Not for any clinical, therapeutic, or diagnostic use in humans or animals. Not for animal or human consumption.

Purchasers shall not, and agree not to enable third parties to, analyze, copy, reverse engineer or otherwise attempt to determine the structure or sequence of the product.



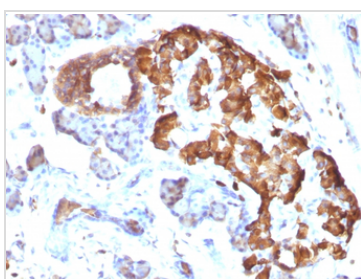
For full product information, images and publications, please visit our [website](#).

DATA IMAGES

GTX35131 ICC/IF Image

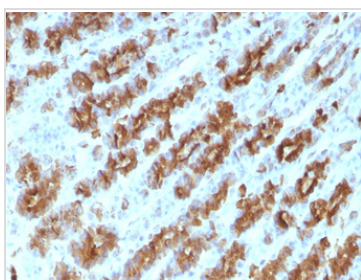
ICC/IF analysis of PFA-fixed HepG2 cells using GTX35131 TNF alpha antibody [TNFA/1172].

Green : Primary antibody

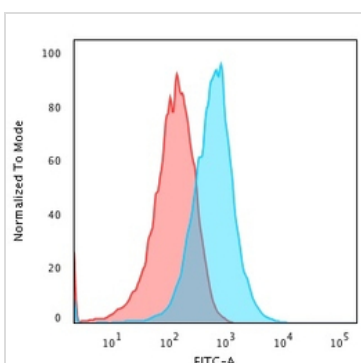
Red : nucleus


GTX35131 IHC-P Image

IHC-P analysis of rat pancreas tissue using GTX35131 TNF alpha antibody [TNFA/1172].


GTX35131 IHC-P Image

IHC-P analysis of rat stomach tissue using GTX35131 TNF alpha antibody [TNFA/1172].


GTX35131 FCM Image

FACS analysis of PFA-fixed HepG2 cells using GTX35131 TNF alpha antibody [TNFA/1172].

Blue : Primary antibody

Red : Isotype control



For full product information, images and publications, please visit our [website](#).