

## Topoisomerase II alpha antibody [TOP2A/1361]

Cat. No. GTX35137

Host	Mouse
Clonality	Monoclonal
Isotype	IgG2b
Applications	WB, ICC/IF, IHC-P, Protein Array
Reactivity	Human, Mouse

References ( 2 )

Package

100 µg

## Applications

## Application Note

\*Optimal dilutions/concentrations should be determined by the researcher.

Suggested dilution	Recommended dilution
WB	1-2µg/ml
ICC/IF	1-2µg/ml
IHC-P	1-2µg/ml for 30 min at RT
Protein Array	Assay dependent

**Note : Staining of formalin-fixed tissues requires heating tissue sections in 10mM Tris with 1mM EDTA, pH 9.0, for 45 min at 95°C followed by cooling at RT for 20 minutes.**

Not tested in other applications.

**Calculated MW** 174 kDa. ( [Note](#) )

**Product Note** KO/KD validation is based on published data (PMID: 34180392).

## Properties

Form	Liquid
Buffer	PBS, 0.05% BSA
Preservative	0.05% Sodium azide
Storage	Store as concentrated solution. Centrifuge briefly prior to opening vial. For short-term storage (1-2 weeks), store at 4°C. For long-term storage, aliquot and store at -20°C or below. Avoid multiple freeze-thaw cycles.
Concentration	0.2 mg/ml (Please refer to the vial label for the specific concentration.)
Immunogen	Recombinant human Topoisomerase II alpha fragment (aa1352-1493)
Purification	Protein A/G purified
Conjugation	Unconjugated



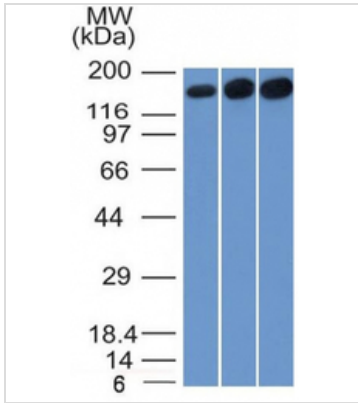
For full product information, images and publications, please visit our [website](#).

Date 2026 / 01 / 28 Page 1 of 2

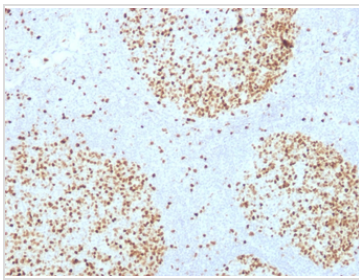
For laboratory research use only. Not for any clinical, therapeutic, or diagnostic use in humans or animals. Not for animal or human consumption.

**Note**

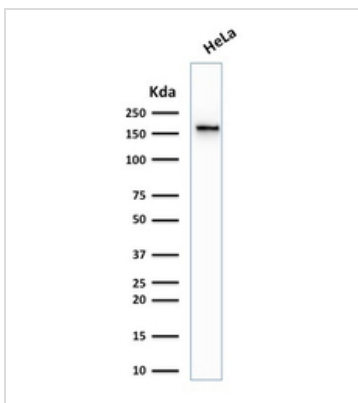
Purchasers shall not, and agree not to enable third parties to, analyze, copy, reverse engineer or otherwise attempt to determine the structure or sequence of the product.

**DATA IMAGES**

**GTX35137 WB Image**

WB analysis of HepG2, HeLa, and 3T3 cell lysates using GTX35137 Topoisomerase II alpha antibody [TOP2A/1361].


**GTX35137 IHC-P Image**

IHC-P analysis of human tonsil tissue using GTX35137 Topoisomerase II alpha antibody [TOP2A/1361].


**GTX35137 WB Image**

WB analysis of HeLa cell lysate using GTX35137 Topoisomerase II alpha antibody [TOP2A/1361].



For full product information, images and publications, please visit our [website](#).