

## Goat Anti-Mouse IgG1 (Heavy chain) antibody, pre-adsorbed (HRP)

**Cat. No. GTX35185**

<b>Host</b>	Goat
<b>Clonality</b>	Polyclonal
<b>Isotype</b>	IgG
<b>Applications</b>	WB, IHC-P, IHC-Fr, FCM, ELISA
<b>Reactivity</b>	Mouse

References ( 2 )

Package

500 µl

## Applications

**Application Note**

\*Optimal dilutions/concentrations should be determined by the researcher.

Suggested dilution	Recommended dilution
WB	Assay dependent
IHC-P	Assay dependent
IHC-Fr	Assay dependent
FCM	Assay dependent
ELISA	Assay dependent

Not tested in other applications.

**Product Note**

It reacts with the heavy chain of mouse IgG1.

Pre-adsorbed with Mouse IgG2a, IgG2b, IgG3, IgM, and IgA; human immunoglobulins and pooled sera. May react with immunoglobulins from other species.

## Properties

<b>Form</b>	Liquid
<b>Buffer</b>	Borate buffered saline
<b>Preservative</b>	No preservatives
<b>Storage</b>	Store as concentrated solution. Centrifuge briefly prior to opening vial. For short-term storage (1-2 weeks), store at 4°C. For long-term storage, aliquot and store at -20°C or below. Avoid multiple freeze-thaw cycles.
<b>Concentration</b>	1 mg/ml Please refer to the vial label for the specific concentration.
<b>Immunogen</b>	The heavy chain of mouse IgG1
<b>Purification</b>	Purified by antigen-affinity chromatography
<b>Conjugation</b>	Horseradish peroxidase(HRP)



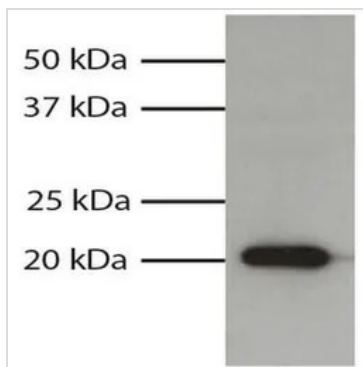
For full product information, images and publications, please visit our [website](#).

For laboratory research use only. Not for any clinical, therapeutic, or diagnostic use in humans or animals. Not for animal or human consumption.

**Note**

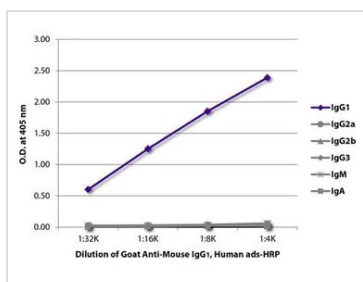
Purchasers shall not, and agree not to enable third parties to, analyze, copy, reverse engineer or otherwise attempt to determine the structure or sequence of the product.

DATA IMAGES



**GTX35185 WB Image**

WB analysis of HL60 cells using Anti-human Bax antibody followed by GTX35185 Mouse IgG1 antibody, pre-adsorbed (HRP).



**GTX35185 ELISA Image**

ELISA analysis of purified mouse IgG1, IgG2a, IgG2b, IgG3, IgM, and IgA using GTX35185 Mouse IgG1 antibody, pre-adsorbed (HRP).



For full product information, images and publications, please visit our [website](#).