

Goat Anti-Mouse IgG1 (Heavy chain) antibody, pre-adsorbed (HRP)

Cat. No. GTX35186

Host	Goat
Clonality	Polyclonal
Isotype	IgG
Applications	WB, IHC-P, ELISA
Reactivity	Mouse

Package
500 µg

Applications

Application Note

*Optimal dilutions/concentrations should be determined by the researcher.

Suggested dilution	Recommended dilution
WB	1:2000-1:20000
IHC-P	1:1000-1:5000
ELISA	1:20000-1:100000

Not tested in other applications.

Product Note

Pre-adsorbed with Bovine, Human, and Rabbit serum proteins. May react with immunoglobulins from other species.

Properties

Form	Liquid
Buffer	20mM Potassium Phosphate, 150mM NaCl, 1% BSA
Preservative	0.01% Gentamicin Sulfate
Storage	Store as concentrated solution. Centrifuge briefly prior to opening vial. For short-term storage (1-2 weeks), store at 4°C. For long-term storage, aliquot and store at -20°C or below. Avoid multiple freeze-thaw cycles.
Concentration	1 mg/ml (Please refer to the vial label for the specific concentration.)
Immunogen	Mouse IgG1 heavy chain
Purification	Purified by antigen-affinity chromatography using Mouse IgG1 coupled to agarose beads followed by solid phase adsorptions to remove any unwanted reactivities. From serum
Conjugation	Horseradish peroxidase(HRP)

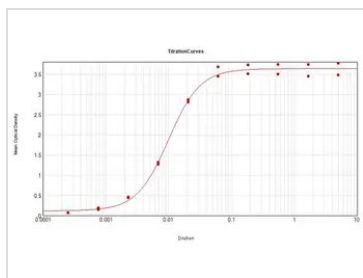


For full product information, images and publications, please visit our [website](#).

For laboratory research use only. Not for any clinical, therapeutic, or diagnostic use in humans or animals. Not for animal or human consumption.

Note

Purchasers shall not, and agree not to enable third parties to, analyze, copy, reverse engineer or otherwise attempt to determine the structure or sequence of the product.

DATA IMAGES

GTX35186 ELISA Image

ELISA analysis of mouse IgG1 using serially diluted GTX35186 Goat Anti-Mouse IgG1 antibody, pre-adsorbed (HRP).

Coating : 1 μ g



For full product information, images and publications, please visit our [website](#).