

# Trident Mitochondria Isolation Kit

**Cat. No. GTX35191**
**Applications**

WB, IP, ELISA, Enzyme Assay

**Package**

20 test, 5 test

**PRODUCT**
**Summary**

GeneTex Mitochondria Isolation Kit (For Mammalian Cells And Tissues) is composed of optimized buffers and protein extraction filter cartridges with 2.0 ml collection tubes. The kit is designed to rapidly isolate native mitochondria proteins from cultured mammalian cells or tissues. Due to the use of protein extraction filter cartridges, the protein isolation procedure is simple, easy and user friendly with high yield. Unlike many commercial mitochondria preparation kits, this kit offers wide range of starting cells (5-50 million/sample) and intact mitochondria are isolated. The buffers are detergent and EDTA free. A Dounce homogenizer or a tissue blender is not needed. The procedure can be completed in less than 30 min.

**Applications**
**Application Note**

\*Optimal dilutions/concentrations should be determined by the researcher.

**Suggested dilution**
**Recommended dilution**

WB Assay dependent

IP Assay dependent

ELISA Assay dependent

Enzyme Assay Assay dependent

Not tested in other applications.

**Product Note**

This product is not recommended for muscle samples.

**Properties**
**Storage**

Store Buffer A and Buffer B at -20°C upon arrival.

**Note**

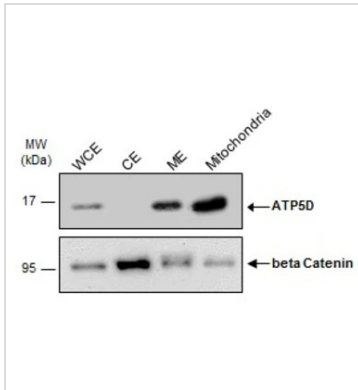
For laboratory research use only. Not for any clinical, therapeutic, or diagnostic use in humans or animals. Not for animal or human consumption.

Purchasers shall not, and agree not to enable third parties to, analyze, copy, reverse engineer or otherwise attempt to determine the structure or sequence of the product.



For full product information, images and publications, please visit our [website](#).

## DATA IMAGES



### GTX35191 WB Image

HepG2 cells were lysed and extracted by GTX35191 Mitochondria Isolation Kit .

When following the protocol, cell extracts would be isolated into cytosolic and total membrane.

The fractions were then assayed by Western Blot analysis, membrane was blotted with an organelle membrane protein- ATP5D antibody (GTX101503, subcellular marker) and beta Catenin antibody (GTX101435, internal control).

Abbreviations:

WCE : whole cell extract

CE : cytosolic extract

ME: total membrane extract



For full product information, images and publications, please visit our [website](https://www.genetex.com).