

Human ILT-4 protein, His tag (active)

Cat. No. GTX35193-pro
Applications Functional Assay

Species Human

Package

100 µg

Applications

Application Note

Measured by its ability of the immobilized protein to support the adhesion of HSB2 human peripheral blood acute lymphoblastic leukemia cells. When 80000 cells/well are added to LILRB2 coated plates (8. 8 µg/ml with 100µL/well), > 4 cells will adhere for 1 hour incubation at 37°C.

Properties

Form Lyophilized powder

Buffer Batch dependent (please contact us for details)

Storage Store at -20°C or below. After reconstitution, keep as concentrated solution. Aliquot and avoid freeze-thaw cycles.

Region/Sequence His-Tag, Gln 22-Val 461 (a.a. H36827)

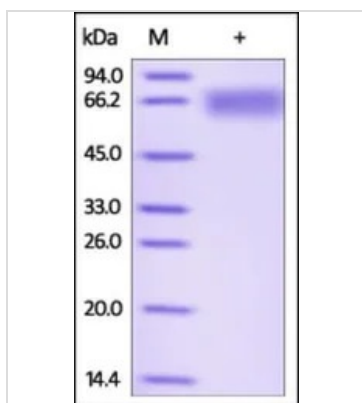
Expression System HEK293 cells

Purity > 92%

Conjugation Unconjugated

Note For In vitro laboratory use only. Not for any clinical, therapeutic, or diagnostic use in humans or animals. Not for animal or human consumption.

DATA IMAGES



GTX35193-pro Image

The purity of human ILT-4 protein was determined by DTT-reduced (+) SDS-PAGE and staining overnight with Coomassie Blue.



For full product information, images and publications, please visit our [website](https://www.genetex.com).