

# EGFR antibody

**Cat. No. GTX35199**

<b>Host</b>	Rabbit
<b>Clonality</b>	Polyclonal
<b>Isotype</b>	IgG
<b>Applications</b>	WB, ICC/IF, IHC-P, IP
<b>Reactivity</b>	Human, Mouse, Rat

References ( 1 )

Package

100 µl

## Applications

### Application Note

\*Optimal dilutions/concentrations should be determined by the researcher.

Suggested dilution	Recommended dilution
WB	1:500 - 1:2000
ICC/IF	1:50 - 1:200
IHC-P	1:50 - 1:200
IP	1:50 - 1:100

Not tested in other applications.

**Calculated MW** 134 kDa. ( [Note](#) )

## Properties

<b>Form</b>	Liquid
<b>Buffer</b>	PBS, 50% Glycerol
<b>Preservative</b>	0.02% Sodium azide
<b>Storage</b>	Store as concentrated solution. Centrifuge briefly prior to opening vial. For short-term storage (1-2 weeks), store at 4°C. For long-term storage, aliquot and store at -20°C or below. Avoid multiple freeze-thaw cycles.
<b>Concentration</b>	Batch dependent (Please refer to the vial label for the specific concentration.)
<b>Immunogen</b>	Recombinant fusion protein containing a sequence corresponding to amino acids 1021-1210 of human EGFR (NP_005219.2).
<b>Purification</b>	Purified by affinity chromatography
<b>Conjugation</b>	Unconjugated

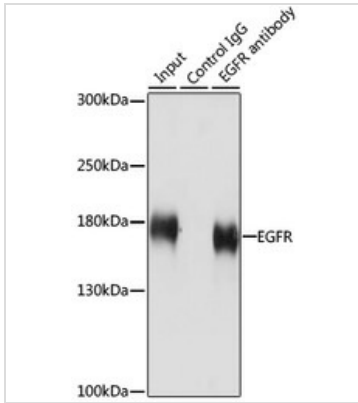


For full product information, images and publications, please visit our [website](#).

For laboratory research use only. Not for any clinical, therapeutic, or diagnostic use in humans or animals. Not for animal or human consumption.

**Note**

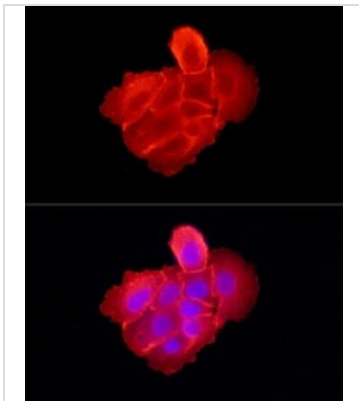
Purchasers shall not, and agree not to enable third parties to, analyze, copy, reverse engineer or otherwise attempt to determine the structure or sequence of the product.

**DATA IMAGES**

**GTX35199 IP Image**

IP analysis of HeLa cell lysate using GTX35199 EGFR antibody.

Antibody amount : 3 $\mu$ g / 200 $\mu$ g lysate

Dilution : 1:1000

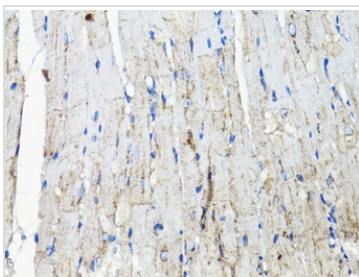

**GTX35199 ICC/IF Image**

ICC/IF analysis of A431 cells using GTX35199 EGFR antibody.

Orange : Primary antibody

Blue : DAPI

Dilution : 1:500


**GTX35199 IHC-P Image**

IHC-P analysis of mouse heart tissue using GTX35199 EGFR antibody.

Antigen retrieval : microwave antigen retrieval with 10mM PBS buffer (pH 7.2)

Dilution : 1:200



For full product information, images and publications, please visit our [website](https://www.genetex.com).