

IKK gamma antibody

Cat. No. GTX35211

Host	Rabbit
Clonality	Polyclonal
Isotype	IgG
Applications	WB, IP
Reactivity	Human, Mouse

Package
100 µl

Applications

Application Note

*Optimal dilutions/concentrations should be determined by the researcher.

Suggested dilution	Recommended dilution
WB	1:500 - 1:2000
IP	1:50 - 1:100

Not tested in other applications.

Calculated MW 48 kDa. ([Note](#))

Properties

Form	Liquid
Buffer	PBS, 50% Glycerol
Preservative	0.02% Sodium azide
Storage	Store as concentrated solution. Centrifuge briefly prior to opening vial. For short-term storage (1-2 weeks), store at 4°C. For long-term storage, aliquot and store at -20°C or below. Avoid multiple freeze-thaw cycles.
Concentration	Batch dependent (Please refer to the vial label for the specific concentration.)
Immunogen	Recombinant fusion protein containing a sequence corresponding to amino acids 1-419 of human IKBKG (NP_003630.1).
Purification	Purified by affinity chromatography
Conjugation	Unconjugated

Note

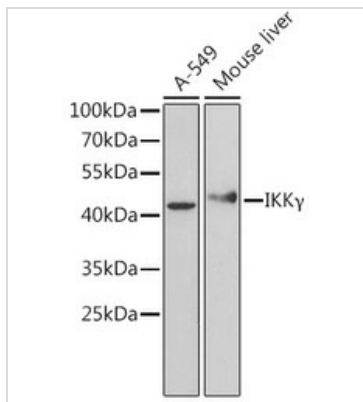
For laboratory research use only. Not for any clinical, therapeutic, or diagnostic use in humans or animals. Not for animal or human consumption.

Purchasers shall not, and agree not to enable third parties to, analyze, copy, reverse engineer or otherwise attempt to determine the structure or sequence of the product.



For full product information, images and publications, please visit our [website](#).

DATA IMAGES

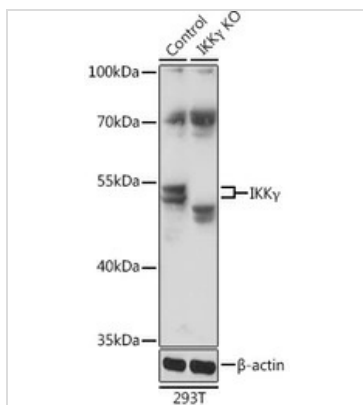


GTX35211 WB Image

WB analysis of various sample lysates using GTX35211 IKK gamma antibody.

Dilution : 1:1000

Loading : 25µg per lane

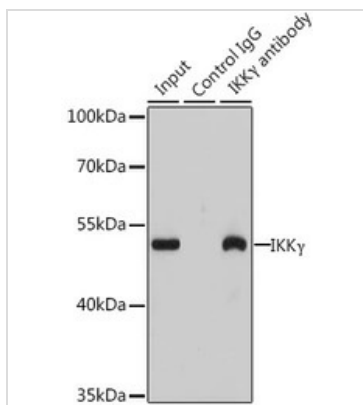


GTX35211 WB Image

WB analysis of normal (control) and knockout (KO) 293T cell lysate using GTX35211 IKK gamma antibody.

Dilution : 1:1000

Loading : 25µg per lane



GTX35211 IP Image

IP analysis of A549 cell lysate using GTX35211 IKK gamma antibody.

Antibody amount : 3µg / 200µg lysate

Dilution : 1:1000



For full product information, images and publications, please visit our [website](#).