

MTH1 antibody

Cat. No. GTX35216

Host	Rabbit
Clonality	Polyclonal
Isotype	IgG
Applications	WB, IHC-P, IP
Reactivity	Human

Package
100 µl

Applications

Application Note

*Optimal dilutions/concentrations should be determined by the researcher.

Suggested dilution	Recommended dilution
WB	1:500 - 1:2000
IHC-P	1:50 - 1:200
IP	1:20 - 1:50

Not tested in other applications.

Calculated MW 23 kDa. ([Note](#))

Properties

Form	Liquid
Buffer	PBS, 50% Glycerol
Preservative	0.02% Sodium azide
Storage	Store as concentrated solution. Centrifuge briefly prior to opening vial. For short-term storage (1-2 weeks), store at 4°C. For long-term storage, aliquot and store at -20°C or below. Avoid multiple freeze-thaw cycles.
Concentration	Batch dependent (Please refer to the vial label for the specific concentration.)
Immunogen	Recombinant fusion protein containing a sequence corresponding to amino acids 1-179 of human NUDT1 (NP_945192.1).
Purification	Purified by affinity chromatography
Conjugation	Unconjugated

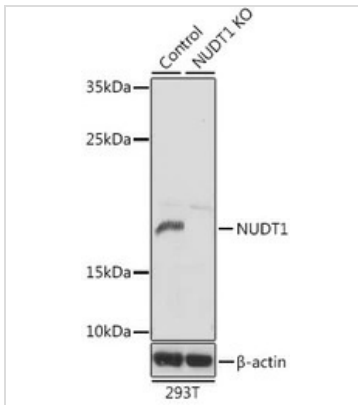
Note

For laboratory research use only. Not for any clinical, therapeutic, or diagnostic use in humans or animals. Not for animal or human consumption.

Purchasers shall not, and agree not to enable third parties to, analyze, copy, reverse engineer or otherwise attempt to determine the structure or sequence of the product.



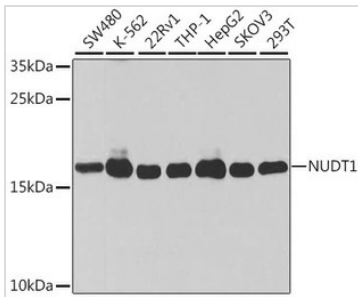
For full product information, images and publications, please visit our [website](#).

DATA IMAGES

GTX35216 WB Image

WB analysis of normal (control) and knockout (KO) 293T cell lysate using GTX35216 MTH1 antibody.

Dilution : 1:1000

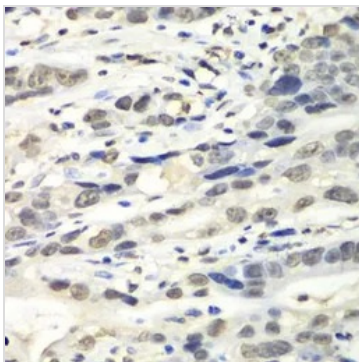
Loading : 25µg per lane


GTX35216 WB Image

WB analysis of various sample lysates using GTX35216 MTH1 antibody.

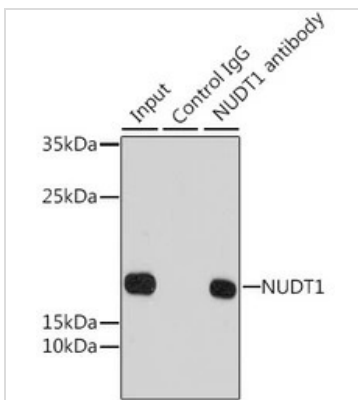
Dilution : 1:1000

Loading : 25µg per lane


GTX35216 IHC-P Image

IHC-P analysis of human gastric cancer tissue using GTX35216 MTH1 antibody.

Dilution : 1:100


GTX35216 IP Image

IP analysis of 293T cell lysate using GTX35216 MTH1 antibody.

Antibody amount : 1µg / 200µg lysate

Dilution : 1:1000



For full product information, images and publications, please visit our [website](https://www.genetex.com).