

Bradykinin B1 receptor antibody

Cat. No. GTX35257

Host	Rabbit
Clonality	Polyclonal
Isotype	IgG
Applications	WB, ICC/IF, IHC-Fr
Reactivity	Mouse, Rat

Package

50 µl

Applications

Application Note

*Optimal dilutions/concentrations should be determined by the researcher.

Suggested dilution	Recommended dilution
WB	Assay dependent
ICC/IF	Assay dependent
IHC-Fr	Assay dependent

Not tested in other applications.

Calculated MW 38 kDa. ([Note](#))

Product Note We do not recommend use of this product for Human samples.

Properties

Form	Liquid
Buffer	PBS, 1% BSA
Preservative	0.05% Sodium azide
Storage	Store as concentrated solution. Centrifuge briefly prior to opening vial. For short-term storage (1-2 weeks), store at 4°C. For long-term storage, aliquot and store at -20°C or below. Avoid multiple freeze-thaw cycles.
Concentration	0.8 mg/ml (Please refer to the vial label for the specific concentration.)
Immunogen	Peptide (C)KEAS RTR*SG GPKGS K, corresponding to amino acid residues 243-257 (3rd intracellular loop) of rat B1R with replacement of cysteine 250 (C250) with serine (*S) (Accession : P97583).
Purification	Purified by antigen-affinity chromatography
Conjugation	Unconjugated

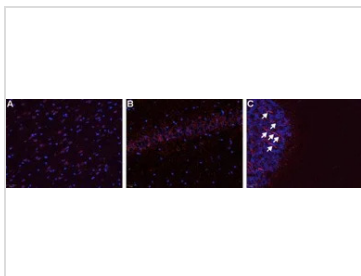


For full product information, images and publications, please visit our [website](#).

For laboratory research use only. Not for any clinical, therapeutic, or diagnostic use in humans or animals. Not for animal or human consumption.

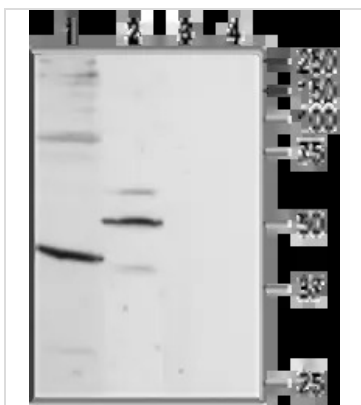
Note

Purchasers shall not, and agree not to enable third parties to, analyze, copy, reverse engineer or otherwise attempt to determine the structure or sequence of the product.

DATA IMAGES

GTX35257 IHC-Fr Image

IHC-Fr analysis of rat CNS tissue using GTX35257 Bradykinin B1 receptor antibody. BKR1 is expressed in neuronal cells of the amygdala (A) and hippocampus (CA1) (B) as well as in the axons of Purkinje cells in the cerebellum (arrowheads on C). Hoechst 33342 is used as the counterstain.

Dilution : 1:50


GTX35257 WB Image

WB analysis of rat brain (lanes 1 and 3) and heart (lanes 2 and 4) lysates using GTX35257 Bradykinin B1 receptor antibody preincubated with or without immunogen peptide.

Dilution : 1:200



For full product information, images and publications, please visit our [website](#).