

MCT1 antibody

Cat. No. GTX35258

Host	Rabbit
Clonality	Polyclonal
Isotype	IgG
Applications	WB, IHC-Fr, FCM, IHC (Free Floating)
Reactivity	Human, Mouse, Rat

References (1)

★★★★★ Review (2)

Package

50 µl

Applications

Application Note

*Optimal dilutions/concentrations should be determined by the researcher.

Suggested dilution	Recommended dilution
WB	Assay dependent
IHC-Fr	Assay dependent
FCM	Assay dependent
IHC (Free Floating)	Assay dependent

Not tested in other applications.

Calculated MW 53 kDa. ([Note](#))

Properties

Form	Liquid
Buffer	PBS, 1% BSA
Preservative	0.05% Sodium azide
Storage	Store as concentrated solution. Centrifuge briefly prior to opening vial. For short-term storage (1-2 weeks), store at 4°C. For long-term storage, aliquot and store at -20°C or below. Avoid multiple freeze-thaw cycles.
Concentration	0.8 mg/ml (Please refer to the vial label for the specific concentration.)
Immunogen	Peptide (C)GRLNDMYGDYKYT, corresponding to amino acid residues 403-415 (6th extracellular loop) of rat MCT1 (Accession : P53987).
Purification	Purified by antigen-affinity chromatography
Conjugation	Unconjugated



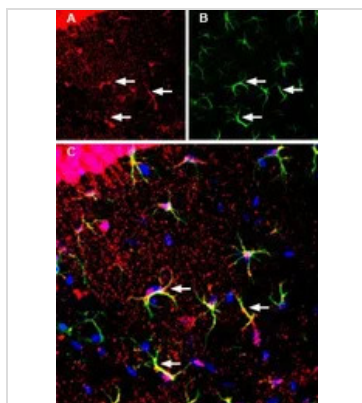
For full product information, images and publications, please visit our [website](#).

For laboratory research use only. Not for any clinical, therapeutic, or diagnostic use in humans or animals. Not for animal or human consumption.

Note

Purchasers shall not, and agree not to enable third parties to, analyze, copy, reverse engineer or otherwise attempt to determine the structure or sequence of the product.

DATA IMAGES



GTx35258 WB Image

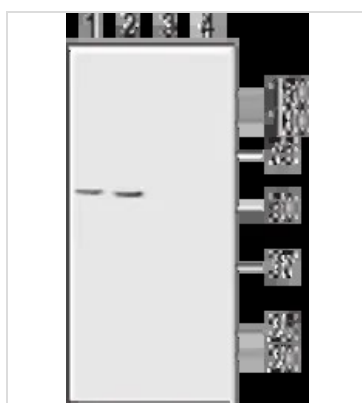
IHC-Frfl (free floating) analysis of mouse hippocampus tissue using GTx35258 MCT1 antibody. Cell nuclei are stained with DAPI (blue).

Panel A : MCT1 staining (red) in CA1 hippocampal region, is detected in the pyramidal layer (P) and in small cell outlines (arrows).

Panel B : GFAP staining (green) is observed in astrocyte outlines (arrows).

Panel C : Merge of the two images demonstrates co-localization of MCT1 and GFAP in astrocytes (arrows).

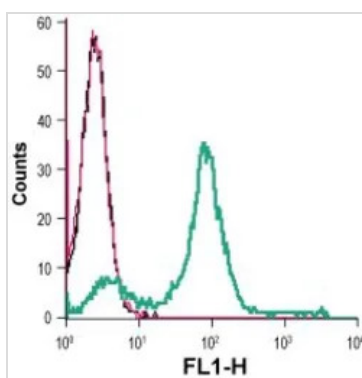
Dilution : 1:200



GTx35258 WB Image

WB analysis of HT-29 (lanes 1 and 3) and ARPE-19 (lanes 2 and 4) cell lysates using GTx35258 MCT1 antibody preincubated with or without immunogen peptide.

Dilution : 1:200



GTx35258 FCM Image

FACS analysis of Jurkat cells using GTx35258 MCT1 antibody.

Black : Unstained cell

Red : Cell staining with isotype control antibody

Green : Cell staining with primary antibody

Antibody amount : 5 µg



For full product information, images and publications, please visit our [website](https://www.genetex.com).