

CaMKII (oxidized) antibody

Cat. No. GTX36254

| | |
|---------------------|--------------------------------|
| Host | Rabbit |
| Clonality | Polyclonal |
| Isotype | IgG |
| Applications | WB, ICC/IF, IHC-P, IHC-Fr, PLA |
| Reactivity | Human, Mouse, Rat |

References (31)

Package

50 µl

Applications

Application Note

For WB, use at a dilution of 1:1,000, For IF, use at a dilution of 1:50 with paraffin-embedded sections and 1:100 with frozen sections.

Product Note Mouse. Predicted to react with human based on 100% sequence identity.

Properties

| | |
|----------------------|--|
| Form | Liquid |
| Buffer | Serum |
| Preservative | 0.05% Sodium azide |
| Storage | Store as concentrated solution. Centrifuge briefly prior to opening vial. For short-term storage (1-2 weeks), store at 4°C. For long-term storage, aliquot and store at -20°C or below. Avoid multiple freeze-thaw cycles. |
| Concentration | Batch dependent (Please refer to the vial label for the specific concentration.) |
| Immunogen | CaMKII synthetic peptide with oxidized Met281/282 |
| Conjugation | Unconjugated |

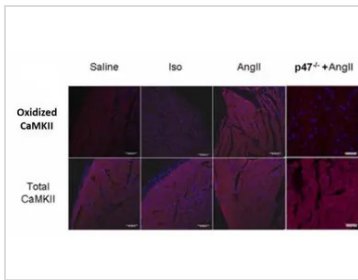
Note

For laboratory research use only. Not for any clinical, therapeutic, or diagnostic use in humans or animals. Not for animal or human consumption.

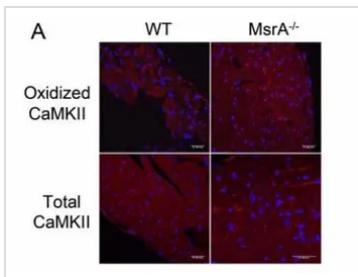
Purchasers shall not, and agree not to enable third parties to, analyze, copy, reverse engineer or otherwise attempt to determine the structure or sequence of the product.



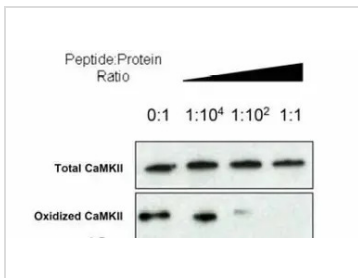
For full product information, images and publications, please visit our [website](#).

DATA IMAGES

GTx36254 IHC-P Image

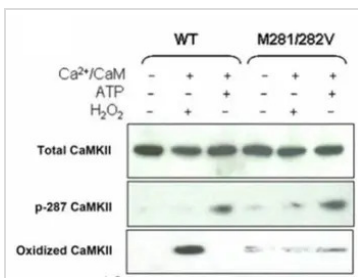
Immunofluorescent staining of heart sections from mice treated with saline, AngII, or Isoproterenol and probed for oxidized or total CaMKII. Red staining is positive for oxidized or total CaMKII, and blue staining is positive for nuclei. Mice lacking a critical subunit of NADPH oxidase (p47^{-/-}) did not show increased levels of oxidized CaMKII in response to AngII.


GTx36254 IHC-P Image

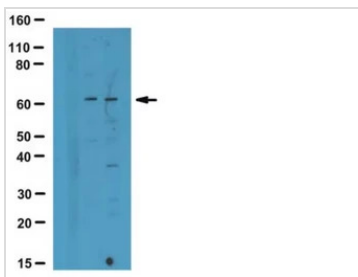
Immunofluorescent staining of heart sections from WT and MsrA^{-/-} mice (a model of heart disease) treated with AngII and probed for oxidized (GTx36254) or total CaMKII and blue staining for nuclei.


GTx36254 WB Image

Immunoblot of oxidized WT CaMKII probed with antiserum against oxidized M281/282 with increasing ratios of oxidized peptide.


GTx36254 WB Image

Immunoblot of WT CaMKII and M281/282V mutant after no treatment, oxidation, or autophosphorylation probed with antibodies against total, autophosphorylated, or oxidized M281/282 CaMKII (GTx36254).


GTx36254 WB Image

WB analysis of various sample lysates using using GTx36254 CaMKII (oxidized) antibody.

Lane 1 : Recombinant CaMKII

Lane 2 : Untreated mouse heart cell lysates

Lane 3 : H₂O₂-treated mouse heart cell lysates

Dilution : 1:1000



For full product information, images and publications, please visit our [website](http://www.genetex.com).