

Human metapneumovirus Nucleoprotein antibody [4821]

Cat. No. GTX36792

Host	Mouse
Clonality	Monoclonal
Isotype	IgG2a
Applications	WB, ICC/IF, ELISA, Lateral Flow, Sandwich ELISA
Reactivity	Human metapneumovirus

References (1)

Package

500 µg

Applications

Application Note

*Optimal dilutions/concentrations should be determined by the researcher.

Suggested dilution	Recommended dilution
WB	Assay dependent
ICC/IF	1:10-1:50
ELISA	1:20-1:200
Lateral Flow	Assay dependent
Sandwich ELISA	Assay dependent

Note : Capture : GTX36793, Detection : GTX36792.**The detection antibody requires HRP conjugation. Please contact us for the conjugation service.**

Not tested in other applications.

Properties

Form	Liquid
Buffer	PBS
Preservative	0.1% Sodium azide
Storage	Store as concentrated solution. Centrifuge briefly prior to opening vial. Store at 4°C.
Concentration	100 µg/ml (Please refer to the vial label for the specific concentration.)
Purification	Protein A purified
Conjugation	Unconjugated

Note

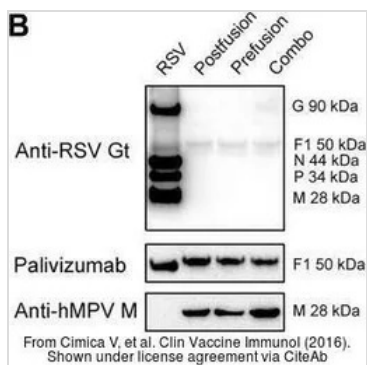
For laboratory research use only. Not for any clinical, therapeutic, or diagnostic use in humans or animals. Not for animal or human consumption.

Purchasers shall not, and agree not to enable third parties to, analyze, copy, reverse engineer or otherwise attempt to determine the structure or sequence of the product.



For full product information, images and publications, please visit our [website](#).

DATA IMAGES



GTX36792 WB Image

The data was published in the journal Clin Vaccine Immunol in 2016. [PMID: 27030590](https://pubmed.ncbi.nlm.nih.gov/27030590/)



For full product information, images and publications, please visit our [website](https://www.genetex.com).