

ROBO1 antibody

Cat. No. GTX36928

Host	Rabbit
Clonality	Polyclonal
Isotype	IgG
Applications	WB, ICC/IF, IHC-P, IHC-Fr, IP, ELISA
Reactivity	Human, Mouse

Package
100 µg

Applications

Application Note

*Optimal dilutions/concentrations should be determined by the researcher.

Suggested dilution	Recommended dilution
WB	1:500-1:3000
ICC/IF	Assay dependent
IHC-P	2-10 µg/mL
IHC-Fr	2-10 µg/mL
IP	Assay dependent
ELISA	1:30000-1:60000

Not tested in other applications.

Calculated MW 181 kDa. ([Note](#))

Properties

Form	Liquid
Buffer	20mM Potassium Phosphate, 150mM NaCl
Preservative	0.01% Sodium azide
Storage	Store as concentrated solution. Centrifuge briefly prior to opening vial. For short-term storage (1-2 weeks), store at 4°C. For long-term storage, aliquot and store at -20°C or below. Avoid multiple freeze-thaw cycles.
Concentration	0.98 mg/ml (Please refer to the vial label for the specific concentration.)
Immunogen	Synthetic peptide corresponding to an C-Terminal region near amino acids 1625-1650 of Human ROBO-1.
Purification	Purified by antigen-affinity chromatography. From serum
Conjugation	Unconjugated

For full product information, images and publications, please visit our [website](#).

For laboratory research use only. Not for any clinical, therapeutic, or diagnostic use in humans or animals. Not for animal or human consumption.

Note

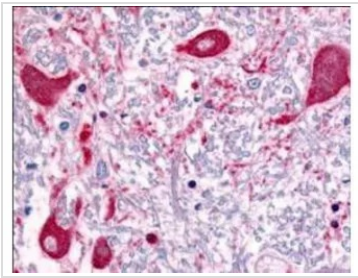
Purchasers shall not, and agree not to enable third parties to, analyze, copy, reverse engineer or otherwise attempt to determine the structure or sequence of the product.

DATA IMAGES



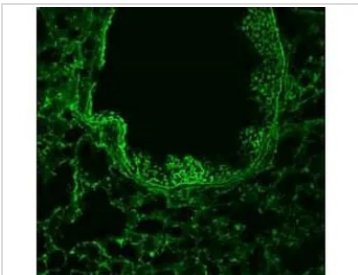
GTX36928 WB Image

Western blot using Affinity Purified anti-ROBO-1 antibody (GTX36928) shows detection of a band at ~181 kDa corresponding to ROBO-1 present in mouse brain lysate (arrowhead). Approximately 35 µg of lysate was separated by 4-8% SDS-PAGE and transferred onto nitrocellulose. After blocking the membrane was probed with the primary antibody diluted to 1:1,000. Reaction occurred 2h at room temperature followed by washes and reaction with a 1:10,000 dilution of infrared 800 conjugated Gt-a-Rabbit IgG [H&L] MX for 45 min at room temperature. Infrared 800 fluorescence image was captured using the OdysseyR Infrared Imaging System developed by LI-COR.



GTX36928 IHC-P Image

Affinity Purified anti-ROBO1 antibody (GTX36928) was used at a concentration of 5 µg/ml to detect ROBO1 in a variety of tissues including multi-human, multi-brain and multi-cancer slides. This image shows staining of human brain tissue. Tissue was formalin-fixed and paraffin embedded.



GTX36928 IHC-Fr Image

1/50 staining mouse lung tissue sections (adult, frozen 100µm wholemount sections) by IHC-Fr. The tissue was paraformaldehyde fixed and permeabilized with polyethylene glycol tert-octylphenyl ether before incubation with the antibody (GTX36928) for 16 hours at 4°C.



For full product information, images and publications, please visit our [website](https://www.genetex.com).