

Phospholamban antibody

Cat. No. GTX37204

Host	Rabbit
Clonality	Polyclonal
Isotype	IgG
Applications	WB
Reactivity	Rat

Package
100 µg

Applications

Application Note

*Optimal dilutions/concentrations should be determined by the researcher.

Suggested dilution	Recommended dilution
WB	Assay dependent

Not tested in other applications.

Calculated MW 6 kDa. ([Note](#))

Properties

Form	Liquid
Buffer	0.001% Na ₂ HPO ₄ , 0.0045% NaCl, 0.025% BSA
Preservative	0.00025% Thimerosal, 0.00025% Sodium azide
Storage	Store as concentrated solution. Centrifuge briefly prior to opening vial. For short-term storage (1-2 weeks), store at 4°C. For long-term storage, aliquot and store at -20°C or below. Avoid multiple freeze-thaw cycles.
Concentration	Batch dependent (Please refer to the vial label for the specific concentration.)
Immunogen	A synthetic peptide corresponding to a sequence at the N-terminus of human PLN(2-16aa EKVQYLTRSAIRRAS), identical to the related rat and mouse sequences.
Purification	Purified by antigen-affinity chromatography
Conjugation	Unconjugated

Note

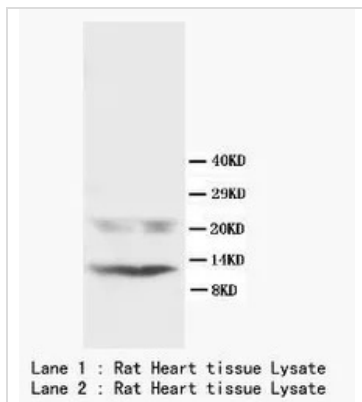
For laboratory research use only. Not for any clinical, therapeutic, or diagnostic use in humans or animals. Not for animal or human consumption.

Purchasers shall not, and agree not to enable third parties to, analyze, copy, reverse engineer or otherwise attempt to determine the structure or sequence of the product.



For full product information, images and publications, please visit our [website](#).

DATA IMAGES



GTX37204 WB Image

WB analysis of rat heart tissue lysate using GTX37204 Phospholamban antibody.



For full product information, images and publications, please visit our [website](#).