

FLIP antibody

Cat. No. GTX37264

Host	Rabbit
Clonality	Polyclonal
Isotype	IgG
Applications	IHC-P
Reactivity	Rat

Package

50 µl

Applications

Application Note

*Optimal dilutions/concentrations should be determined by the researcher.

Suggested dilution	Recommended dilution
IHC-P	1:400-800

Not tested in other applications.

Properties

Form	Liquid
Buffer	10mM TBS, 0.5% BSA, 25% Glycerol
Preservative	0.015% ProClin 300
Storage	Store as concentrated solution. Centrifuge briefly prior to opening vial. For short-term storage (1-2 weeks), store at 4°C. For long-term storage, aliquot and store at -20°C or below. Avoid multiple freeze-thaw cycles.
Concentration	0.5 mg/ml (Please refer to the vial label for the specific concentration.)
Immunogen	KLH conjugated synthetic peptide derived between 17-90 amino acids of human Caspase 8
Purification	Protein A purified
Conjugation	Unconjugated

Note

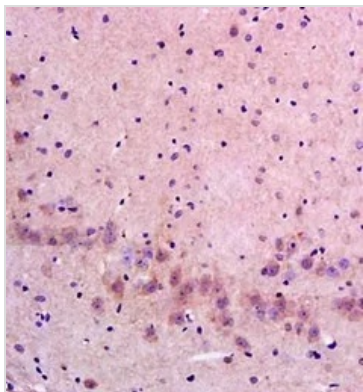
For laboratory research use only. Not for any clinical, therapeutic, or diagnostic use in humans or animals. Not for animal or human consumption.

Purchasers shall not, and agree not to enable third parties to, analyze, copy, reverse engineer or otherwise attempt to determine the structure or sequence of the product.



For full product information, images and publications, please visit our [website](#).

DATA IMAGES



GTX37264 IHC-P Image

IHC-P analysis of rat brain tissue using GTX37264 FLIP antibody.



For full product information, images and publications, please visit our [website](#).