

LIGHT antibody

Cat. No. GTX37328

Host	Rabbit
Clonality	Polyclonal
Isotype	IgG
Applications	WB, IHC-P
Reactivity	Mouse, Rat

Package
100 µg

Applications

Application Note

*Optimal dilutions/concentrations should be determined by the researcher.

Suggested dilution	Recommended dilution
WB	1:500-2000
IHC-P	1:400-800

Not tested in other applications.

Calculated MW 26 kDa. ([Note](#))

Properties

Form	Liquid
Buffer	10mM TBS, 0.5% BSA, 25% Glycerol
Preservative	0.015% ProClin 300
Storage	Store as concentrated solution. Centrifuge briefly prior to opening vial. For short-term storage (1-2 weeks), store at 4°C. For long-term storage, aliquot and store at -20°C or below. Avoid multiple freeze-thaw cycles.
Concentration	0.5 mg/ml (Please refer to the vial label for the specific concentration.)
Immunogen	KLH conjugated synthetic peptide derived between 151-230 amino acids of human TNFSF14
Purification	Protein A purified
Conjugation	Unconjugated

Note

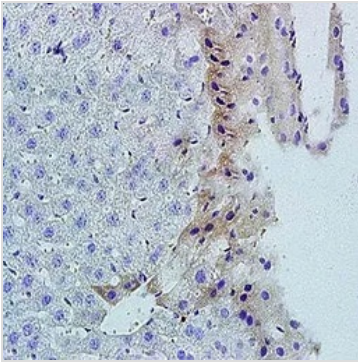
For laboratory research use only. Not for any clinical, therapeutic, or diagnostic use in humans or animals. Not for animal or human consumption.

Purchasers shall not, and agree not to enable third parties to, analyze, copy, reverse engineer or otherwise attempt to determine the structure or sequence of the product.

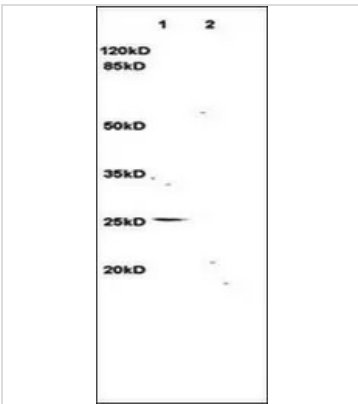


For full product information, images and publications, please visit our [website](#).

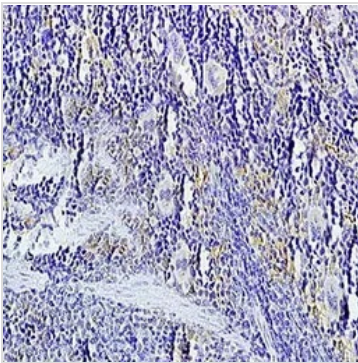
DATA IMAGES

**GTX37328 IHC-P Image**

IHC-P analysis of mouse liver tissue using GTX37328 LIGHT antibody.
Dilution : 1:200

**GTX37328 WB Image**

WB analysis of rat brain (Lane 1), rat kidney (Lane 2) tissue lysates using GTX37328 LIGHT antibody.
Dilution : 1:3000

**GTX37328 IHC-P Image**

IHC-P analysis of rat spleen tissue using GTX37328 LIGHT antibody.
Dilution : 1:200



For full product information, images and publications, please visit our [website](#).