

PGC1 alpha antibody

Cat. No. GTX37356

Host	Rabbit
Clonality	Polyclonal
Isotype	IgG
Applications	WB
Reactivity	Human, Mouse, Rat

References (35)

★★★★★ Review (1)

Package
100 µg

Applications

Application Note

*Optimal dilutions/concentrations should be determined by the researcher.

Suggested dilution	Recommended dilution
WB	1:200-1000
Not tested in other applications.	

Calculated MW 91 kDa. ([Note](#))

Properties

Form	Liquid
Buffer	PBS
Preservative	0.02% Sodium azide
Storage	Store as concentrated solution. Centrifuge briefly prior to opening vial. For short-term storage (1-2 weeks), store at 4°C. For long-term storage, aliquot and store at -20°C or below. Avoid multiple freeze-thaw cycles.
Concentration	0.5 mg/ml (Please refer to the vial label for the specific concentration.)
Immunogen	KLH conjugated synthetic peptide derived from human PGC1 alpha. Please contact us for the exact immunogen sequence.
Purification	Purified by antigen-affinity chromatography
Conjugation	Unconjugated

Note

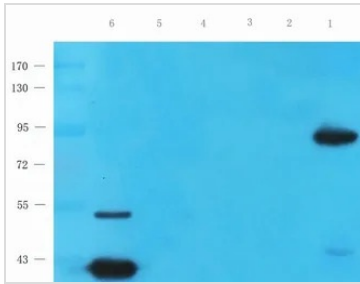
For laboratory research use only. Not for any clinical, therapeutic, or diagnostic use in humans or animals. Not for animal or human consumption.

Purchasers shall not, and agree not to enable third parties to, analyze, copy, reverse engineer or otherwise attempt to determine the structure or sequence of the product.



For full product information, images and publications, please visit our [website](#).

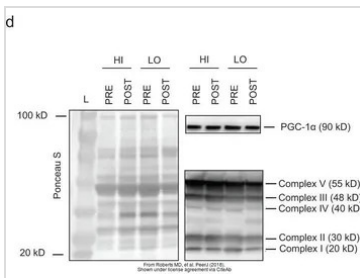
DATA IMAGES



GTX37356 WB Image

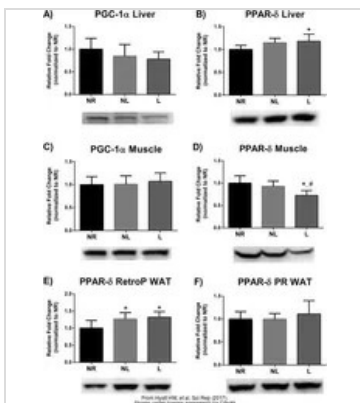
WB analysis of rat heart (Lane 1), mouse skeletal muscle (Lane 2), rat testis (Lane 3), mouse colon (Lane 4), rat thymus (Lane 5), mouse liver (Lane 6) tissue lysates using GTX37356 PGC1 alpha antibody.

Dilution : 0.5µg/ml



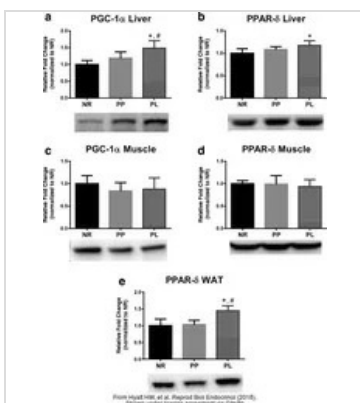
GTX37356 WB Image

The data was published in the 2018 in PeerJ. [PMID: 30065891](https://doi.org/10.2196/30065891)



GTX37356 WB Image

The data was published in the journal Sci Rep in 2017. [PMID: 29215072](https://doi.org/10.1038/s41598-017-02915-0)



GTX37356 WB Image

The data was published in the journal Reprod Biol Endocrinol in 2018. [PMID: 29316934](https://doi.org/10.1186/s12900-018-0693-4)



For full product information, images and publications, please visit our [website](https://www.genetex.com).