

NTCP antibody

Cat. No. GTX37362

Host	Rabbit
Clonality	Polyclonal
Isotype	IgG
Applications	WB, IHC-P, IHC-Fr
Reactivity	Human, Mouse, Rat, Guinea pig

Package
100 µg

Applications

Application Note

*Optimal dilutions/concentrations should be determined by the researcher.

Suggested dilution	Recommended dilution
WB	1:200-2000
IHC-P	1:100-600
IHC-Fr	Assay dependent

Not tested in other applications.

Calculated MW 38 kDa. ([Note](#))

Properties

Form	Liquid
Buffer	PBS
Preservative	0.02% Sodium azide
Storage	Store as concentrated solution. Centrifuge briefly prior to opening vial. For short-term storage (1-2 weeks), store at 4°C. For long-term storage, aliquot and store at -20°C or below. Avoid multiple freeze-thaw cycles.
Concentration	0.5 mg/ml (Please refer to the vial label for the specific concentration.)
Immunogen	KLH conjugated synthetic peptide derived from human NTCP. Please contact us for the exact immunogen sequence.
Purification	Purified by antigen-affinity chromatography
Conjugation	Unconjugated

Note

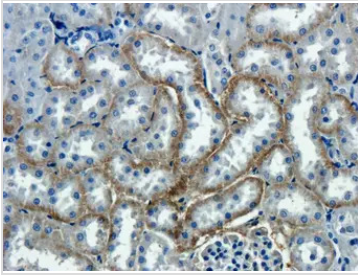
For laboratory research use only. Not for any clinical, therapeutic, or diagnostic use in humans or animals. Not for animal or human consumption.

Purchasers shall not, and agree not to enable third parties to, analyze, copy, reverse engineer or otherwise attempt to determine the structure or sequence of the product.



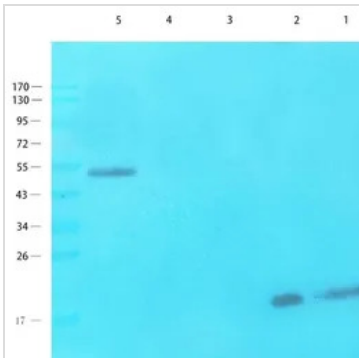
For full product information, images and publications, please visit our [website](#).

DATA IMAGES



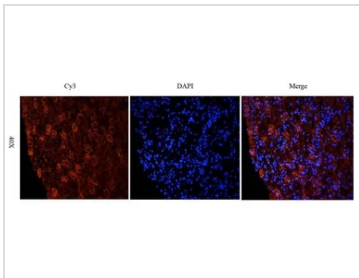
GTX37362 IHC-P Image

IHC-P analysis of guinea pig kidney tissue using GTX37362 NTCP antibody.
Dilution : 2.5µg/ml



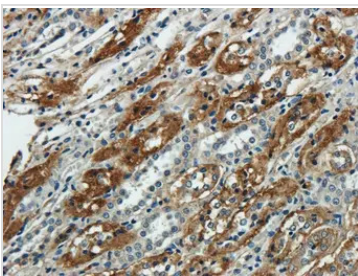
GTX37362 WB Image

WB analysis of various tissue lysates using GTX37362 NTCP antibody.
Lane 1: Rat liver
Lane 2: Rat kidney
Lane 3: Rat spleen
Lane 4: Mouse lung
Lane 5: Human thyroid cancer
Dilution : 1µg/ml



GTX37362 IHC-P Image

IHC-P analysis of guinea pig kidney tissue using GTX37362 NTCP antibody.
Dilution: 2.5 µg/ml
Red: GTX37362



GTX37362 IHC-P Image

IHC-P analysis of guinea pig kidney tissue using GTX37362 NTCP antibody. Dilution: 2.5 µg/ml



For full product information, images and publications, please visit our [website](#).