

CD303 antibody

Cat. No. GTX37364

Host	Rabbit
Clonality	Polyclonal
Isotype	IgG
Applications	WB, IHC-P
Reactivity	Mouse, Rat, Pig

Package
100 µg

Applications

Application Note

*Optimal dilutions/concentrations should be determined by the researcher.

Suggested dilution	Recommended dilution
WB	1-2µg/ml
IHC-P	1:200 (based on 0.5 mg/ml)

Not tested in other applications.

Calculated MW 25 kDa. ([Note](#))

Properties

Form	Liquid
Buffer	PBS
Preservative	0.02% Sodium azide
Storage	Store as concentrated solution. Centrifuge briefly prior to opening vial. For short-term storage (1-2 weeks), store at 4°C. For long-term storage, aliquot and store at -20°C or below. Avoid multiple freeze-thaw cycles.
Concentration	0.5 mg/ml (Please refer to the vial label for the specific concentration.)
Immunogen	KLH conjugated synthetic peptide derived from human CD303.
Purification	Purified by antigen-affinity chromatography
Conjugation	Unconjugated

Note

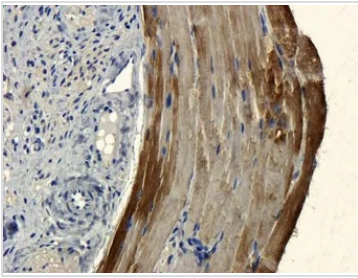
For laboratory research use only. Not for any clinical, therapeutic, or diagnostic use in humans or animals. Not for animal or human consumption.

Purchasers shall not, and agree not to enable third parties to, analyze, copy, reverse engineer or otherwise attempt to determine the structure or sequence of the product.



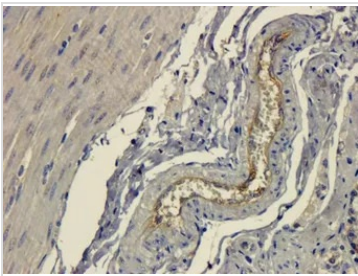
For full product information, images and publications, please visit our [website](#).

DATA IMAGES



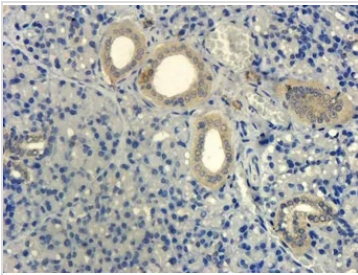
GTX37364 IHC-P Image

IHC-P analysis of mouse lymph gland tissue using GTX37364 CD303 antibody.
Dilution : 1:200



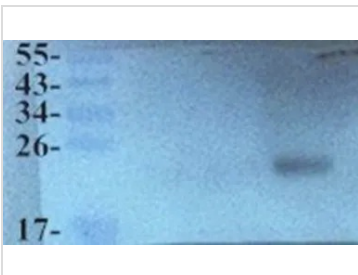
GTX37364 IHC-P Image

IHC-P analysis of pig small intestine vessel tissue using GTX37364 CD303 antibody.
Dilution : 1:100



GTX37364 IHC-P Image

IHC-P analysis of mouse lymph gland tissue using GTX37364 CD303 antibody.
Dilution : 1:100



GTX37364 WB Image

WB analysis of rat small intestine tissue lysate using GTX37364 CD303 antibody.
Dilution : 2µg/ml



For full product information, images and publications, please visit our [website](#).