

GLUT12 antibody

Cat. No. GTX37419

| | |
|---------------------|------------|
| Host | Rabbit |
| Clonality | Polyclonal |
| Isotype | IgG |
| Applications | IHC-P |
| Reactivity | Human, Rat |

References (1)

Package

100 µg

Applications

Application Note

*Optimal dilutions/concentrations should be determined by the researcher.

| Suggested dilution | Recommended dilution |
|--------------------|----------------------|
| IHC-P | 1:400-800 |

Not tested in other applications.

Properties

| | |
|----------------------|--|
| Form | Liquid |
| Buffer | 10mM TBS, 0.5% BSA, 25% Glycerol |
| Preservative | 0.015% ProClin 300 |
| Storage | Store as concentrated solution. Centrifuge briefly prior to opening vial. For short-term storage (1-2 weeks), store at 4°C. For long-term storage, aliquot and store at -20°C or below. Avoid multiple freeze-thaw cycles. |
| Concentration | 0.5 mg/ml (Please refer to the vial label for the specific concentration.) |
| Immunogen | KLH conjugated synthetic peptide derived between 261-340 amino acids of human GLUT12 |
| Purification | Protein A purified |
| Conjugation | Unconjugated |

Note

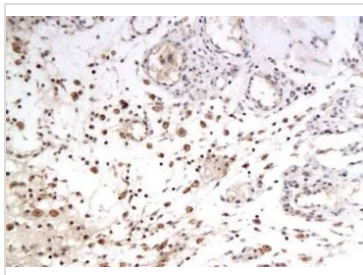
For laboratory research use only. Not for any clinical, therapeutic, or diagnostic use in humans or animals. Not for animal or human consumption.

Purchasers shall not, and agree not to enable third parties to, analyze, copy, reverse engineer or otherwise attempt to determine the structure or sequence of the product.



For full product information, images and publications, please visit our [website](#).

DATA IMAGES



GTX37419 IHC-P Image

IHC-P analysis of rat subcutaneous tumor transplantation tissue using GTX37419 GLUT12 antibody.



For full product information, images and publications, please visit our [website](#).