

# CD26 antibody

**Cat. No. GTX37454**

<b>Host</b>	Rabbit
<b>Clonality</b>	Polyclonal
<b>Isotype</b>	IgG
<b>Applications</b>	IHC-P
<b>Reactivity</b>	Rat

**Package**  
100 µg

## Applications

### Application Note

\*Optimal dilutions/concentrations should be determined by the researcher.

Suggested dilution	Recommended dilution
IHC-P	1:400-800

Not tested in other applications.

## Properties

<b>Form</b>	Liquid
<b>Buffer</b>	10mM TBS, 0.5% BSA, 25% Glycerol
<b>Preservative</b>	0.015% ProClin 300
<b>Storage</b>	Store as concentrated solution. Centrifuge briefly prior to opening vial. For short-term storage (1-2 weeks), store at 4°C. For long-term storage, aliquot and store at -20°C or below. Avoid multiple freeze-thaw cycles.
<b>Concentration</b>	0.5 mg/ml (Please refer to the vial label for the specific concentration.)
<b>Immunogen</b>	KLH conjugated synthetic peptide derived between 671-756 amino acids of human CD26
<b>Purification</b>	Protein A purified
<b>Conjugation</b>	Unconjugated

### Note

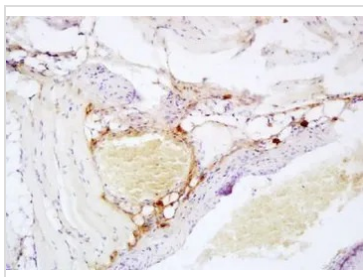
For laboratory research use only. Not for any clinical, therapeutic, or diagnostic use in humans or animals. Not for animal or human consumption.

Purchasers shall not, and agree not to enable third parties to, analyze, copy, reverse engineer or otherwise attempt to determine the structure or sequence of the product.



For full product information, images and publications, please visit our [website](#).

## DATA IMAGES



### GTX37454 IHC-P Image

IHC-P analysis of lymph-vessel of rat tongue tissue using GTX37454 CD26 antibody.

Dilution : 1:200



For full product information, images and publications, please visit our [website](#).