

Apelin antibody

Cat. No. GTX37465

Host	Rabbit
Clonality	Polyclonal
Isotype	IgG
Applications	ICC/IF, IHC-P, IHC
Reactivity	Human, Mouse, Rat

References (6)

Package

100 µg

Applications

Application Note

*Optimal dilutions/concentrations should be determined by the researcher.

Suggested dilution	Recommended dilution
ICC/IF	Assay dependent
IHC-P	1:400-800
IHC	Assay dependent

Not tested in other applications.

Properties

Form	Liquid
Buffer	10mM TBS, 0.5% BSA, 25% Glycerol
Preservative	0.015% ProClin 300
Storage	Store as concentrated solution. Centrifuge briefly prior to opening vial. For short-term storage (1-2 weeks), store at 4°C. For long-term storage, aliquot and store at -20°C or below. Avoid multiple freeze-thaw cycles.
Concentration	0.5 mg/ml (Please refer to the vial label for the specific concentration.)
Immunogen	KLH conjugated synthetic peptide derived between 75-67 amino acids of human Apelin
Purification	Protein A purified
Conjugation	Unconjugated

Note

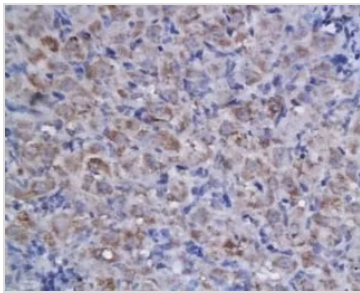
For laboratory research use only. Not for any clinical, therapeutic, or diagnostic use in humans or animals. Not for animal or human consumption.

Purchasers shall not, and agree not to enable third parties to, analyze, copy, reverse engineer or otherwise attempt to determine the structure or sequence of the product.



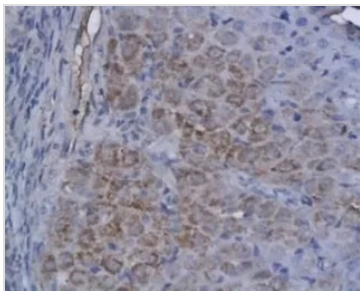
For full product information, images and publications, please visit our [website](#).

DATA IMAGES



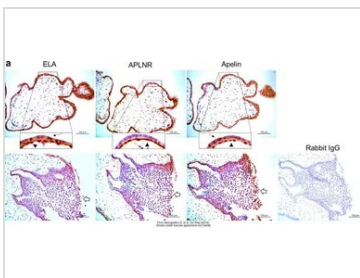
GTX37465 IHC-P Image

IHC-P analysis of rat ovary tissue using GTX37465 Apelin antibody.
Dilution : 1:100



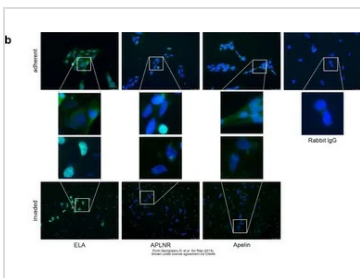
GTX37465 IHC-P Image

IHC-P analysis of rat ovary tissue using GTX37465 Apelin antibody.



GTX37465 IHC Image

The data was published in the journal Sci Rep in 2019. [PMID: 31836787](https://pubmed.ncbi.nlm.nih.gov/31836787/)



GTX37465 ICC/IF Image

The data was published in the journal Sci Rep in 2019. [PMID: 31836787](https://pubmed.ncbi.nlm.nih.gov/31836787/)



For full product information, images and publications, please visit our [website](https://www.genetex.com).