

# Apelin antibody

**Cat. No. GTX37465**

<b>Host</b>	Rabbit
<b>Clonality</b>	Polyclonal
<b>Isotype</b>	IgG
<b>Applications</b>	ICC/IF, IHC-P, IHC
<b>Reactivity</b>	Human, Mouse, Rat

References ( 6 )

Package

100 µg

## Applications

### Application Note

\*Optimal dilutions/concentrations should be determined by the researcher.

Suggested dilution	Recommended dilution
ICC/IF	Assay dependent
IHC-P	1:400-800
IHC	Assay dependent

Not tested in other applications.

## Properties

<b>Form</b>	Liquid
<b>Buffer</b>	10mM TBS, 0.5% BSA, 25% Glycerol
<b>Preservative</b>	0.015% ProClin 300
<b>Storage</b>	Store as concentrated solution. Centrifuge briefly prior to opening vial. For short-term storage (1-2 weeks), store at 4°C. For long-term storage, aliquot and store at -20°C or below. Avoid multiple freeze-thaw cycles.
<b>Concentration</b>	0.5 mg/ml (Please refer to the vial label for the specific concentration.)
<b>Immunogen</b>	KLH conjugated synthetic peptide derived between 75-67 amino acids of human Apelin
<b>Purification</b>	Protein A purified
<b>Conjugation</b>	Unconjugated

### Note

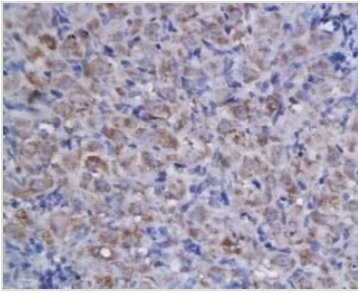
For laboratory research use only. Not for any clinical, therapeutic, or diagnostic use in humans or animals. Not for animal or human consumption.

Purchasers shall not, and agree not to enable third parties to, analyze, copy, reverse engineer or otherwise attempt to determine the structure or sequence of the product.



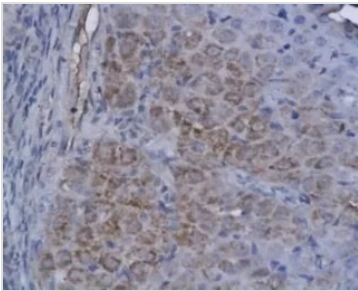
For full product information, images and publications, please visit our [website](#).

## DATA IMAGES



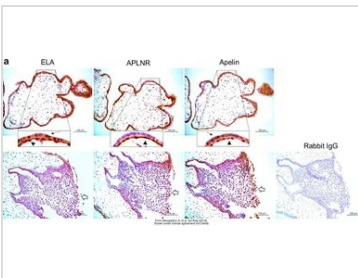
### GTX37465 IHC-P Image

IHC-P analysis of rat ovary tissue using GTX37465 Apelin antibody.  
Dilution : 1:100



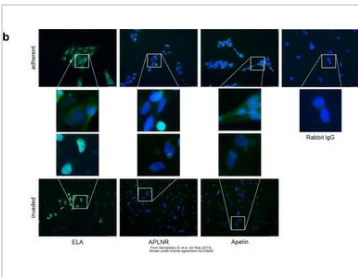
### GTX37465 IHC-P Image

IHC-P analysis of rat ovary tissue using GTX37465 Apelin antibody.



### GTX37465 IHC Image

The data was published in the journal Sci Rep in 2019. [PMID: 31836787](https://pubmed.ncbi.nlm.nih.gov/31836787/)



### GTX37465 ICC/IF Image

The data was published in the journal Sci Rep in 2019. [PMID: 31836787](https://pubmed.ncbi.nlm.nih.gov/31836787/)



For full product information, images and publications, please visit our [website](https://www.genetex.com).