

# Aldolase A antibody

**Cat. No. GTX37468**

<b>Host</b>	Rabbit
<b>Clonality</b>	Polyclonal
<b>Isotype</b>	IgG
<b>Applications</b>	WB, IHC-P
<b>Reactivity</b>	Human, Turtle

References ( 1 )

Package

100 µg

## Applications

### Application Note

\*Optimal dilutions/concentrations should be determined by the researcher.

Suggested dilution	Recommended dilution
WB	Assay dependent
IHC-P	1:400-800

Not tested in other applications.

**Calculated MW** 39 kDa. ( [Note](#) )

## Properties

<b>Form</b>	Liquid
<b>Buffer</b>	10mM TBS, 0.5% BSA, 25% Glycerol
<b>Preservative</b>	0.015% ProClin 300
<b>Storage</b>	Store as concentrated solution. Centrifuge briefly prior to opening vial. For short-term storage (1-2 weeks), store at 4°C. For long-term storage, aliquot and store at -20°C or below. Avoid multiple freeze-thaw cycles.
<b>Concentration</b>	0.5 mg/ml (Please refer to the vial label for the specific concentration.)
<b>Immunogen</b>	KLH conjugated synthetic peptide derived between 271-354 amino acids of human Aldolase A
<b>Purification</b>	Protein A purified
<b>Conjugation</b>	Unconjugated

### Note

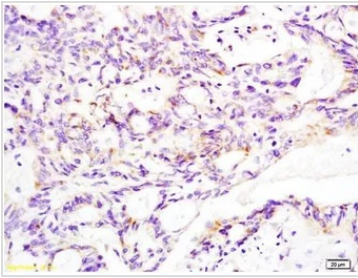
For laboratory research use only. Not for any clinical, therapeutic, or diagnostic use in humans or animals. Not for animal or human consumption.

Purchasers shall not, and agree not to enable third parties to, analyze, copy, reverse engineer or otherwise attempt to determine the structure or sequence of the product.



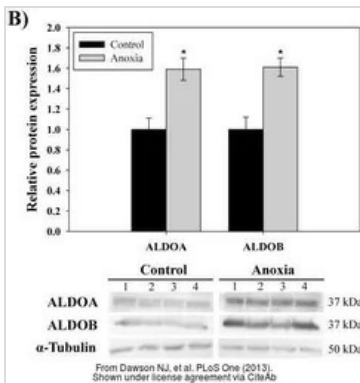
For full product information, images and publications, please visit our [website](#).

DATA IMAGES



**GTX37468 IHC-P Image**

IHC-P analysis of human rectal carcinoma tissue using GTX37468 Aldolase A antibody.



**GTX37468 WB Image**

The data was published in the journal PLoS One in 2013. [PMID: 23874782](https://pubmed.ncbi.nlm.nih.gov/23874782/)



For full product information, images and publications, please visit our [website](https://www.genetex.com).