

CD8 alpha antibody

Cat. No. GTX37508

Host	Rabbit
Clonality	Polyclonal
Isotype	IgG
Applications	WB
Reactivity	Mouse

Package
100 µl

Applications

Application Note

*Optimal dilutions/concentrations should be determined by the researcher.

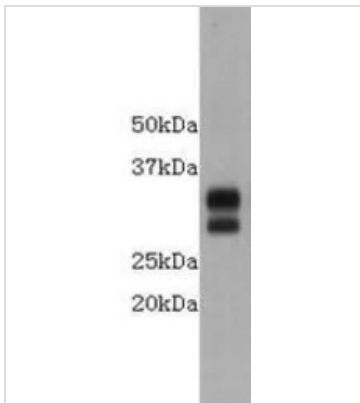
Suggested dilution	Recommended dilution
WB	1:500
Not tested in other applications.	

Calculated MW 27 kDa. ([Note](#))

Properties

Form	Liquid
Buffer	TBS, 0.5% BSA, 25% Glycerol
Preservative	0.05% Sodium azide
Storage	Store as concentrated solution. Centrifuge briefly prior to opening vial. For short-term storage (1-2 weeks), store at 4°C. For long-term storage, aliquot and store at -20°C or below. Avoid multiple freeze-thaw cycles.
Concentration	0.5 mg/ml (Please refer to the vial label for the specific concentration.)
Immunogen	This antibody is produced by immunizing rabbits with a synthetic peptide (KLH-coupled) corresponding to near N-terminal residues of Cd8a protein.
Purification	Purified by affinity chromatography
Conjugation	Unconjugated
Note	For laboratory research use only. Not for any clinical, therapeutic, or diagnostic use in humans or animals. Not for animal or human consumption. Purchasers shall not, and agree not to enable third parties to, analyze, copy, reverse engineer or otherwise attempt to determine the structure or sequence of the product.

For full product information, images and publications, please visit our [website](#).

DATA IMAGES

GTX37508 WB Image

WB analysis of mouse thymus tissue lysate using GTX37508 CD8 alpha antibody.



For full product information, images and publications, please visit our [website](https://www.genetex.com).