

PACAP antibody

Cat. No. GTX37576

Host	Rabbit
Clonality	Polyclonal
Isotype	IgG
Applications	WB, IHC-P, IHC-Fr, IHC
Reactivity	Rat

References (3)

Package

100 µg

Applications

Application Note

*Optimal dilutions/concentrations should be determined by the researcher.

Suggested dilution	Recommended dilution
WB	Assay dependent
IHC-P	1:400-800
IHC-Fr	Assay dependent
IHC	Assay dependent

Not tested in other applications.

Calculated MW 19 kDa. ([Note](#))

Properties

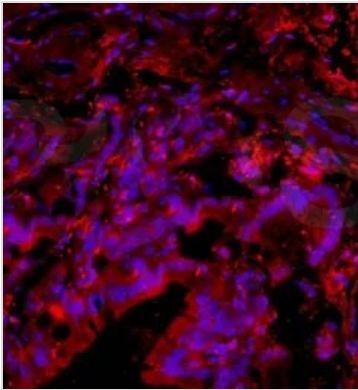
Form	Liquid
Buffer	10mM TBS, 0.5% BSA, 25% Glycerol
Preservative	0.015% ProClin 300
Storage	Store as concentrated solution. Centrifuge briefly prior to opening vial. For short-term storage (1-2 weeks), store at 4°C. For long-term storage, aliquot and store at -20°C or below. Avoid multiple freeze-thaw cycles.
Concentration	0.5 mg/ml (Please refer to the vial label for the specific concentration.)
Immunogen	KLH conjugated synthetic peptide derived between 41-28 amino acids of human PACAP 38
Purification	Protein A purified
Conjugation	Unconjugated

Note

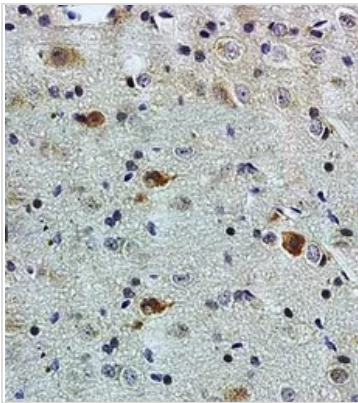
For laboratory research use only. Not for any clinical, therapeutic, or diagnostic use in humans or animals. Not for animal or human consumption.

Purchasers shall not, and agree not to enable third parties to, analyze, copy, reverse engineer or otherwise attempt to determine the structure or sequence of the product.

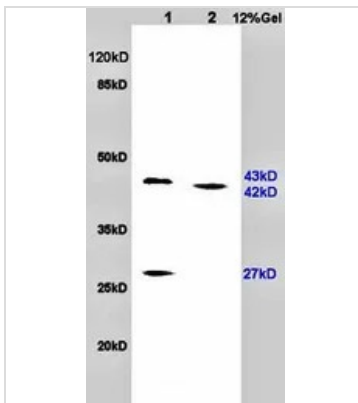
For full product information, images and publications, please visit our [website](#).

DATA IMAGES

GTX37576 IHC-Fr Image

IHC-Fr analysis of rat brain tissue using GTX37576 PACAP antibody.


GTX37576 IHC-P Image

IHC-P analysis of rat brain tissue using GTX37576 PACAP antibody.


GTX37576 WB Image

WB analysis of rat brain (Lane 1) and rat heart (Lane 2) tissue lysates using GTX37576 PACAP antibody.



For full product information, images and publications, please visit our [website](https://www.genetex.com).