

## NIS antibody

Cat. No. GTX37599

Host	Rabbit
Clonality	Polyclonal
Isotype	IgG
Applications	WB, IHC-P, IHC-Fr, IHC
Reactivity	Human, Rat

References ( 3 )

Package

100 µg

## Applications

## Application Note

\*Optimal dilutions/concentrations should be determined by the researcher.

Suggested dilution	Recommended dilution
WB	1:500-2000
IHC-P	1:400-800
IHC-Fr	Assay dependent
IHC	Assay dependent

Not tested in other applications.

Calculated MW 69 kDa. ( [Note](#) )

## Properties

Form	Liquid
Buffer	10mM TBS, 0.5% BSA, 25% Glycerol
Preservative	0.015% ProClin 300
Storage	Store as concentrated solution. Centrifuge briefly prior to opening vial. For short-term storage (1-2 weeks), store at 4°C. For long-term storage, aliquot and store at -20°C or below. Avoid multiple freeze-thaw cycles.
Concentration	0.5 mg/ml (Please refer to the vial label for the specific concentration.)
Immunogen	KLH conjugated synthetic peptide derived between 535-608 amino acids of human NIS
Purification	Protein A purified
Conjugation	Unconjugated

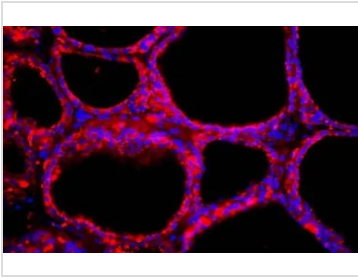
## Note

For laboratory research use only. Not for any clinical, therapeutic, or diagnostic use in humans or animals. Not for animal or human consumption.

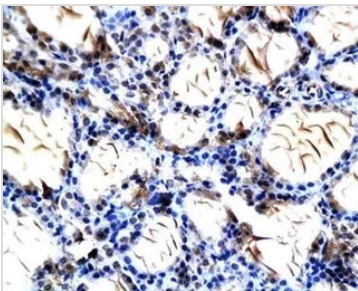
Purchasers shall not, and agree not to enable third parties to, analyze, copy, reverse engineer or otherwise attempt to determine the structure or sequence of the product.



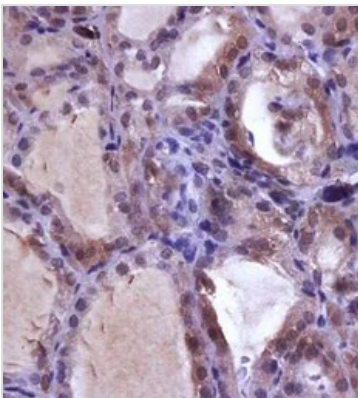
For full product information, images and publications, please visit our [website](#).

**DATA IMAGES**

**GTX37599 IHC-Fr Image**

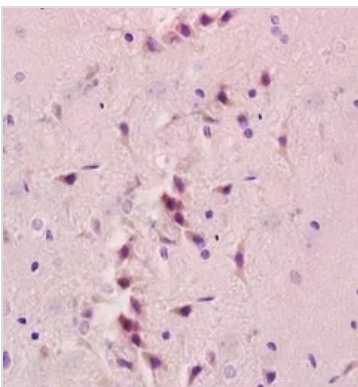
IHC-Fr analysis of human thyroid tissue using GTX37599 NIS antibody.  
Dilution : 1:200


**GTX37599 IHC-P Image**

IHC-P analysis of rat thyroid gland tissue using GTX37599 NIS antibody.


**GTX37599 IHC-P Image**

IHC-P analysis of rat thyroid gland tissue using GTX37599 NIS antibody.


**GTX37599 IHC-P Image**

IHC-P analysis of rat brain tissue using GTX37599 NIS antibody.  
Dilution : 1:200



For full product information, images and publications, please visit our [website](https://www.genetex.com).