

## Leptin Receptor antibody

**Cat. No. GTX37636**

|                     |               |
|---------------------|---------------|
| <b>Host</b>         | Rabbit        |
| <b>Clonality</b>    | Polyclonal    |
| <b>Isotype</b>      | IgG           |
| <b>Applications</b> | IHC-P, IHC-Fr |
| <b>Reactivity</b>   | Rat, Pig      |

References ( 2 )

Package

100 µg

## Applications

**Application Note**

\*Optimal dilutions/concentrations should be determined by the researcher.

| Suggested dilution | Recommended dilution |
|--------------------|----------------------|
| IHC-P              | 1:100-500            |
| IHC-Fr             | Assay dependent      |

Not tested in other applications.

## Properties

|                      |  |
|----------------------|--|
| <b>Form</b>          | Liquid   |
| <b>Buffer</b>        | PBS  |
| <b>Preservative</b>  | 0.02% Sodium azide   |
| <b>Storage</b>       | Store as concentrated solution. Centrifuge briefly prior to opening vial. For short-term storage (1-2 weeks), store at 4°C. For long-term storage, aliquot and store at -20°C or below. Avoid multiple freeze-thaw cycles. |
| <b>Concentration</b> | 0.5 mg/ml (Please refer to the vial label for the specific concentration.)   |
| <b>Immunogen</b>     | KLH conjugated synthetic peptide derived from human Leptin Receptor.   |
| <b>Purification</b>  | Purified by antigen-affinity chromatography  |
| <b>Conjugation</b>   | Unconjugated   |

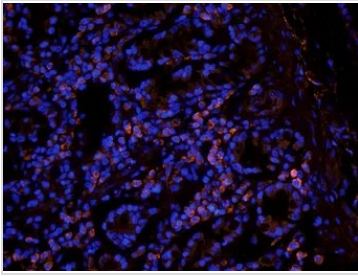
**Note**

For laboratory research use only. Not for any clinical, therapeutic, or diagnostic use in humans or animals. Not for animal or human consumption.

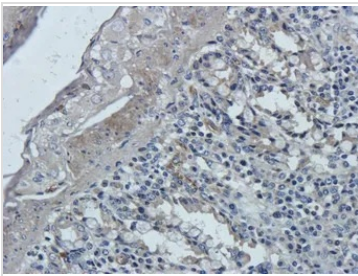
Purchasers shall not, and agree not to enable third parties to, analyze, copy, reverse engineer or otherwise attempt to determine the structure or sequence of the product.

For full product information, images and publications, please visit our [website](#).

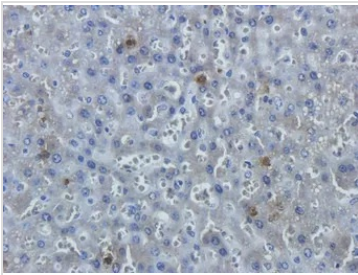
## DATA IMAGES

**GTX37636 IHC-Fr Image**

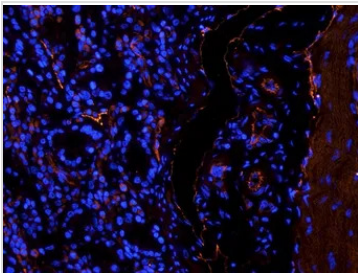
IHC-Fr analysis of pig small intestines tissue using GTX37636 Leptin Receptor antibody.  
Dilution : 2.5µg/ml

**GTX37636 IHC-P Image**

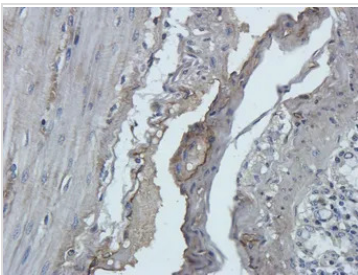
IHC-P analysis of pig small intestines tissue using GTX37636 Leptin Receptor antibody.  
Dilution : 2.5µg/ml

**GTX37636 IHC-P Image**

IHC-P analysis of rat liver tissue using GTX37636 Leptin Receptor antibody.  
Dilution : 2.5µg/ml

**GTX37636 IHC-Fr Image**

IHC-Fr analysis of pig small intestines tissue using GTX37636 Leptin Receptor antibody.  
Dilution: 2.5µg/m

**GTX37636 IHC-P Image**

IHC-P analysis of pig small intestines tissue using GTX37636 Leptin Receptor antibody.  
Dilution: 2.5µg/ml



For full product information, images and publications, please visit our [website](#).