

LDL Receptor antibody

Cat. No. GTX37639

Host	Rabbit
Clonality	Polyclonal
Isotype	IgG
Applications	WB, FCM
Reactivity	Human, Rat

References (2)

Package

100 µg

Applications

Application Note

*Optimal dilutions/concentrations should be determined by the researcher.

Suggested dilution	Recommended dilution
WB	1:500-2000
FCM	Assay dependent

Not tested in other applications.

Calculated MW 95 kDa. ([Note](#))

Properties

Form	Liquid
Buffer	10mM TBS, 0.5% BSA, 25% Glycerol
Preservative	0.015% ProClin 300
Storage	Store as concentrated solution. Centrifuge briefly prior to opening vial. For short-term storage (1-2 weeks), store at 4°C. For long-term storage, aliquot and store at -20°C or below. Avoid multiple freeze-thaw cycles.
Concentration	0.5 mg/ml (Please refer to the vial label for the specific concentration.)
Immunogen	KLH conjugated synthetic peptide derived between 791-850 amino acids of human LDL Receptor
Purification	Protein A purified
Conjugation	Unconjugated

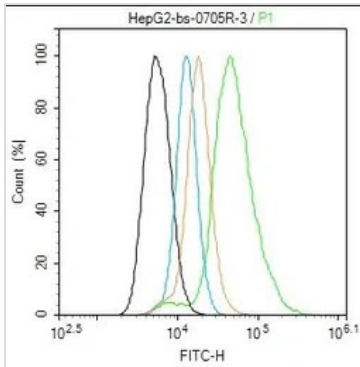
Note

For laboratory research use only. Not for any clinical, therapeutic, or diagnostic use in humans or animals. Not for animal or human consumption.

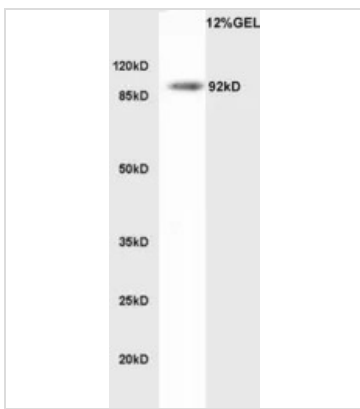
Purchasers shall not, and agree not to enable third parties to, analyze, copy, reverse engineer or otherwise attempt to determine the structure or sequence of the product.



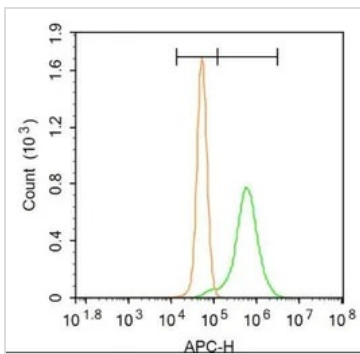
For full product information, images and publications, please visit our [website](#).

DATA IMAGES

GTX37639 FCM Image

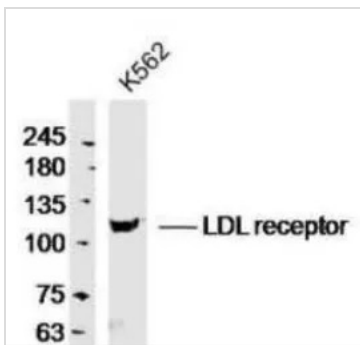
FACS analysis of HepG2 cells using GTX37639 LDL Receptor antibody.


GTX37639 WB Image

WB analysis of human colon tissue lysate using GTX37639 LDL Receptor antibody.


GTX37639 FCM Image

FACS analysis of A431 cells using GTX37639 LDL Receptor antibody.


GTX37639 WB Image

WB analysis of K562 cell lysate using GTX37639 LDL Receptor antibody.



For full product information, images and publications, please visit our [website](https://www.genetex.com).